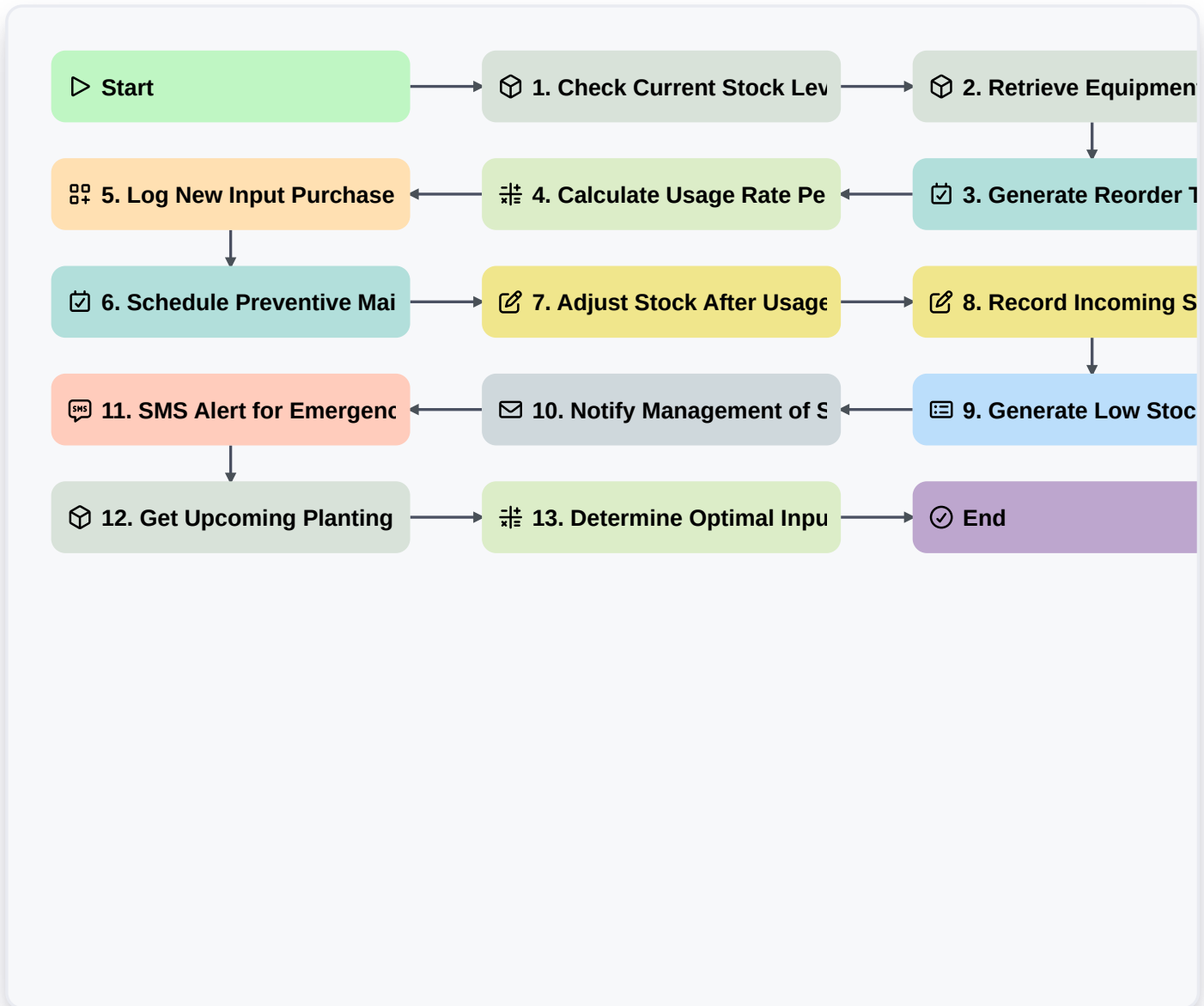


# Agricultural Inventory & Input Management Workflow For Modern Farming



▷ **Start**

Start of the Workflow/Process.

 **1. Check Current Stock Levels**

Retrieve current inventory levels for key inputs (seeds, fertilizer, pesticide) from the Inventory Data Model.

 **2. Retrieve Equipment Maintenance Records**

Fetch historical maintenance logs for farm machinery.

 **3. Generate Reorder Task**

Create a task for procurement staff when stock falls below predefined thresholds.

 **4. Calculate Usage Rate Per Acre**

Calculate the required input amount per unit of harvested acreage based on plan.

 **5. Log New Input Purchase**

Create a new record for purchased inputs, including supplier, quantity, and date.

📅 **6. Schedule Preventive Maintenance Task**

Automatically assign a task to the maintenance team for upcoming equipment servicing.

✍️ **7. Adjust Stock After Usage**

Update the stock count after inputs are consumed during planting or application.

✍️ **8. Record Incoming Shipment Receipt**

Update inventory records upon successful receipt of new supplies.

📄 **9. Generate Low Stock Alert Report**

Compile a report listing all inputs requiring immediate reordering.

✉️ **10. Notify Management of Stock Alert**

Send an automated email notification to farm managers when critical stock levels are breached.

📱 **11. SMS Alert for Emergency Input Need**

Send an urgent text message to the site supervisor regarding critical shortages.

📅 **12. Get Upcoming Planting Schedule**

Fetch the detailed planting schedule for the current season.

🔢 **13. Determine Optimal Input Mix**

Run a formula to suggest the best combination/ratio of fertilizers based on soil analysis data.

🏁 **End**

Start of the Workflow/Process.