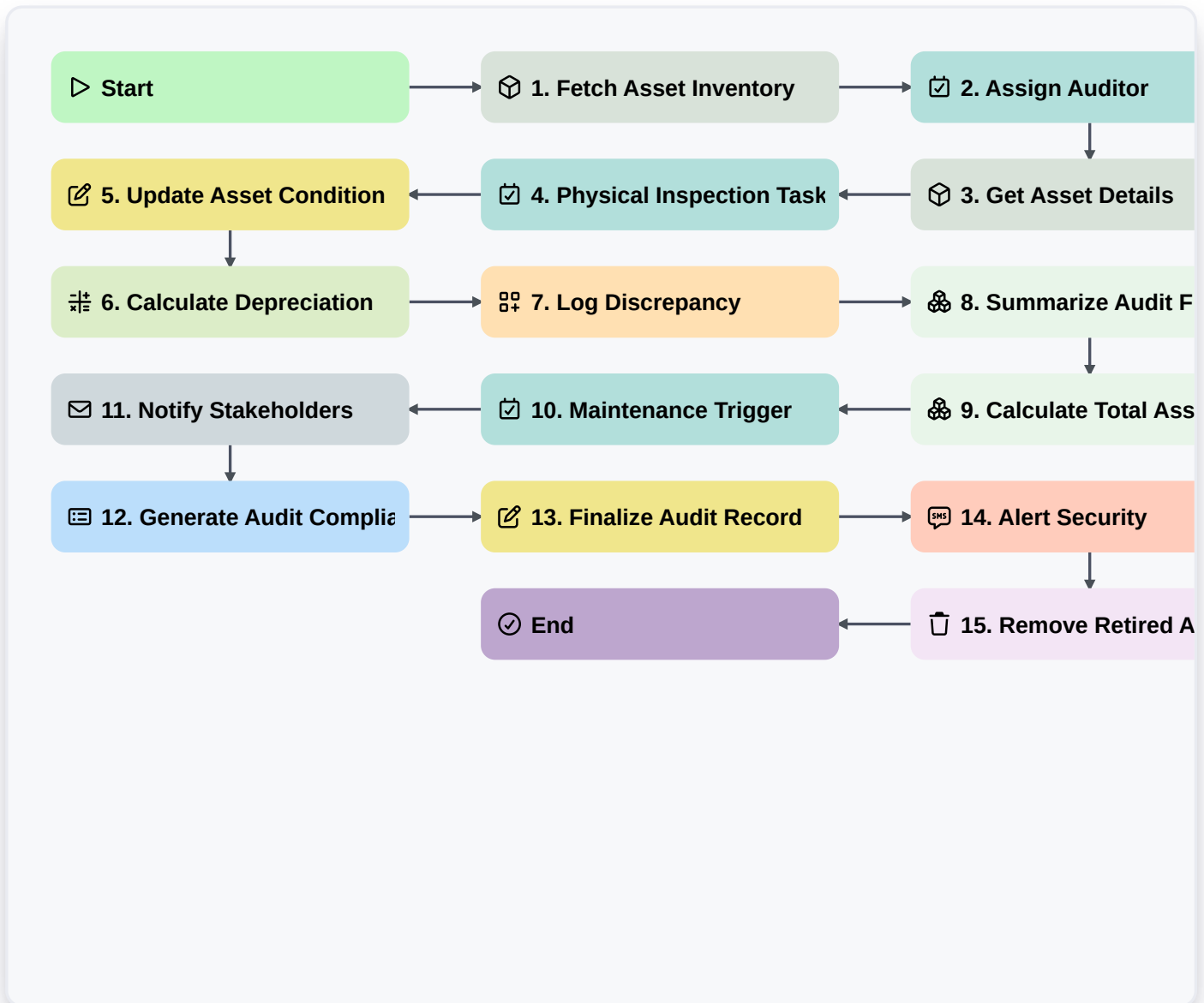


# Asset Inspection And Audit Workflow



## Start

Start of the Workflow/Process.

## 1. Fetch Asset Inventory

Retrieve all active assets from the Asset Data Model to begin the audit scope.

## 2. Assign Auditor

Create a task for the Warehouse Manager to assign a specific inspector to the audit cycle.

## 3. Get Asset Details

Retrieve specific metadata (serial numbers, location, last inspection date) for the selected assets.

## 4. Physical Inspection Task

Create a task for the Field Technician to perform the physical walkthrough and condition check.

## 5. Update Asset Condition

Update the 'Last Inspection Status' and 'Current Condition' fields in the Asset Data Model based on findings.

## 6. Calculate Depreciation

Execute a formula to calculate the current value of the asset based on age and usage metrics.



## 7. Log Discrepancy

If an asset is missing or damaged, create a new entry in the 'Audit Discrepancy' data model.

## 8. Summarize Audit Findings

Aggregate the total number of 'Passed' vs 'Failed' assets to calculate the overall audit success rate.

## 9. Calculate Total Asset Value

Sum the total monetary value of all assets inspected during this audit cycle.

## 10. Maintenance Trigger

If an asset is marked as 'Damaged', create a maintenance task for the repair team.

## 11. Notify Stakeholders

Send an email summary of the audit results to the Operations Director.

## 12. Generate Audit Compliance Report

Generate a formal PDF/Report document containing all findings, discrepancies, and signatures.

## 13. Finalize Audit Record

Update the Audit Session entry to 'Completed' status.

## 14. Alert Security

Send an SMS alert if a high-value asset is flagged as 'Missing' during the audit.

## 15. Remove Retired Assets

Delete entries from the active inventory if they are confirmed as 'Disposed' during the audit.

## End

End of the Workflow/Process.