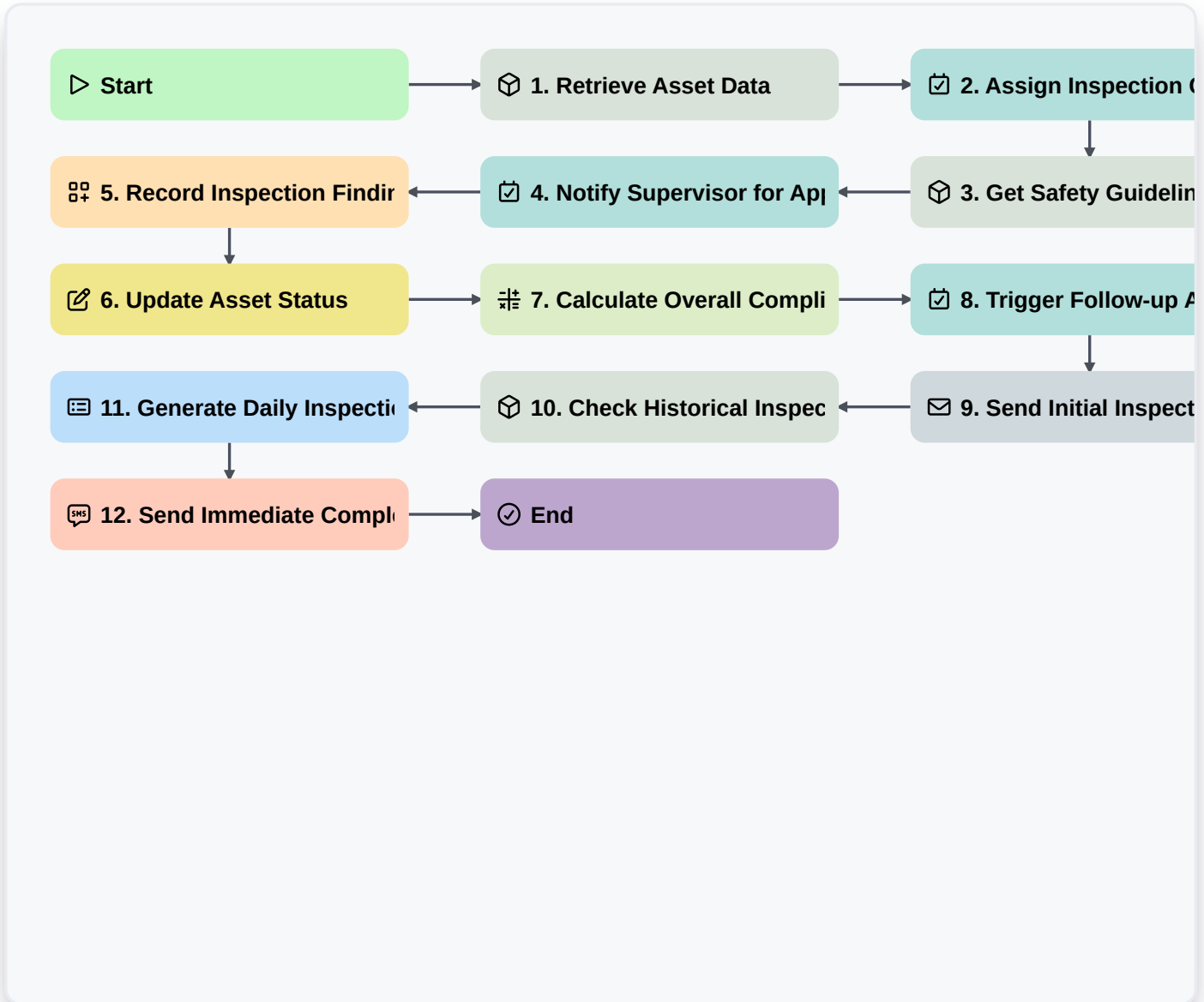


Asset Inspection Management: End-To-End Workflow For Industrial Compliance



▶ Start

Start of the Workflow/Process.

📦 1. Retrieve Asset Data

Fetch necessary asset information (ID, location, inspection type) from the Asset Data Model.

✅ 2. Assign Inspection Checklist Task

Automatically create the inspection task assigned to the qualified technician for the specified asset.

📦 3. Get Safety Guidelines

Retrieve required safety protocols and compliance standards based on the asset's industry sector.

✅ 4. Notify Supervisor for Approval

Create a notification task for the supervisor to review and approve the scheduled inspection.

📝 5. Record Inspection Findings

Allow the technician to create a new inspection entry recording observations and test results against the checklist.

6. Update Asset Status

Update the asset's record status (e.g., 'Inspected', 'Needs Repair') after completion.

7. Calculate Overall Compliance Score

Execute a formula to calculate a compliance score based on all recorded pass/fail results in the checklist.

8. Trigger Follow-up Action Task

If deficiencies are found, create a follow-up task for required corrective actions (e.g., 'Repair Required').

9. Send Initial Inspection Assignment Email

Email the assigned technician with the checklist, scope, and due date.

10. Check Historical Inspection Records

Fetch the last 'N' inspection records for the asset to contextualize the current inspection.

11. Generate Daily Inspection Report

Compile a formal report summarizing findings, compliance status, and corrective actions taken for documentation.

12. Send Immediate Completion Alert

Send an SMS confirmation to the site manager immediately upon successful submission of the final inspection report.

End

Start of the Workflow/Process.