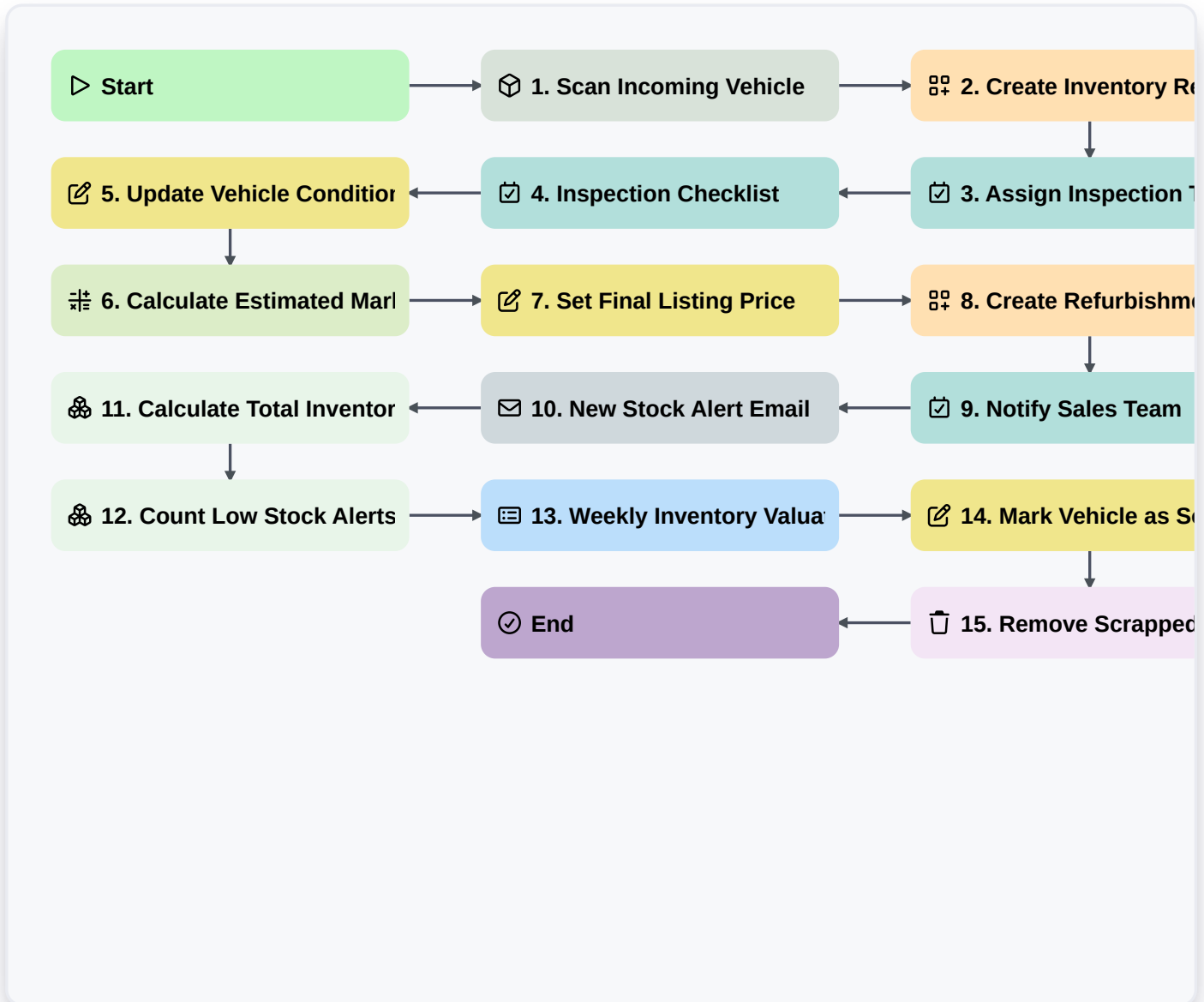


Automotive Inventory Management Workflow



▷ Start

Start of the Workflow/Process.

📦 1. Scan Incoming Vehicle

Retrieve vehicle details from the Inventory Data Model using a VIN scan.

📄 2. Create Inventory Record

Generate a new entry in the Inventory Data Model for the newly arrived vehicle.

📝 3. Assign Inspection Task

Create a task for the Quality Control technician to perform a multi-point inspection.

📝 4. Inspection Checklist

Standardized list of points to check: engine, bodywork, electronics, and tire tread.

📝 5. Update Vehicle Condition

Update the 'Condition Status' field in the Inventory entry based on inspection results.

📈 6. Calculate Estimated Market Value

Calculate value based on (Base Price + Refurbishment Cost - Depreciation).



7. Set Final Listing Price

Update the 'Listing Price' field in the Inventory Data Model with the calculated value.

8. Create Refurbishment Order

Create a new entry in the Service/Maintenance Data Model if damage was detected.

9. Notify Sales Team

Create a task for the Sales Manager to review the new stock arrival.

10. New Stock Alert Email

Send an automated email to the sales department with the vehicle details and photos.

11. Calculate Total Inventory Value

Sum the 'Listing Price' of all entries in the Inventory Data Model to see total capital tied in stock.

12. Count Low Stock Alerts

Count entries where 'Days in Stock' exceeds 60 days.

13. Weekly Inventory Valuation Report

Generate a report summarizing total inventory, value, and upcoming maintenance costs.

14. Mark Vehicle as Sold

Update the status of the vehicle entry to 'Sold' once a transaction is confirmed.

15. Remove Scrapped Vehicles

Delete entries from the active inventory model for vehicles marked as 'Scrapped' or 'Disposed'.

End

End of the Workflow/Process.