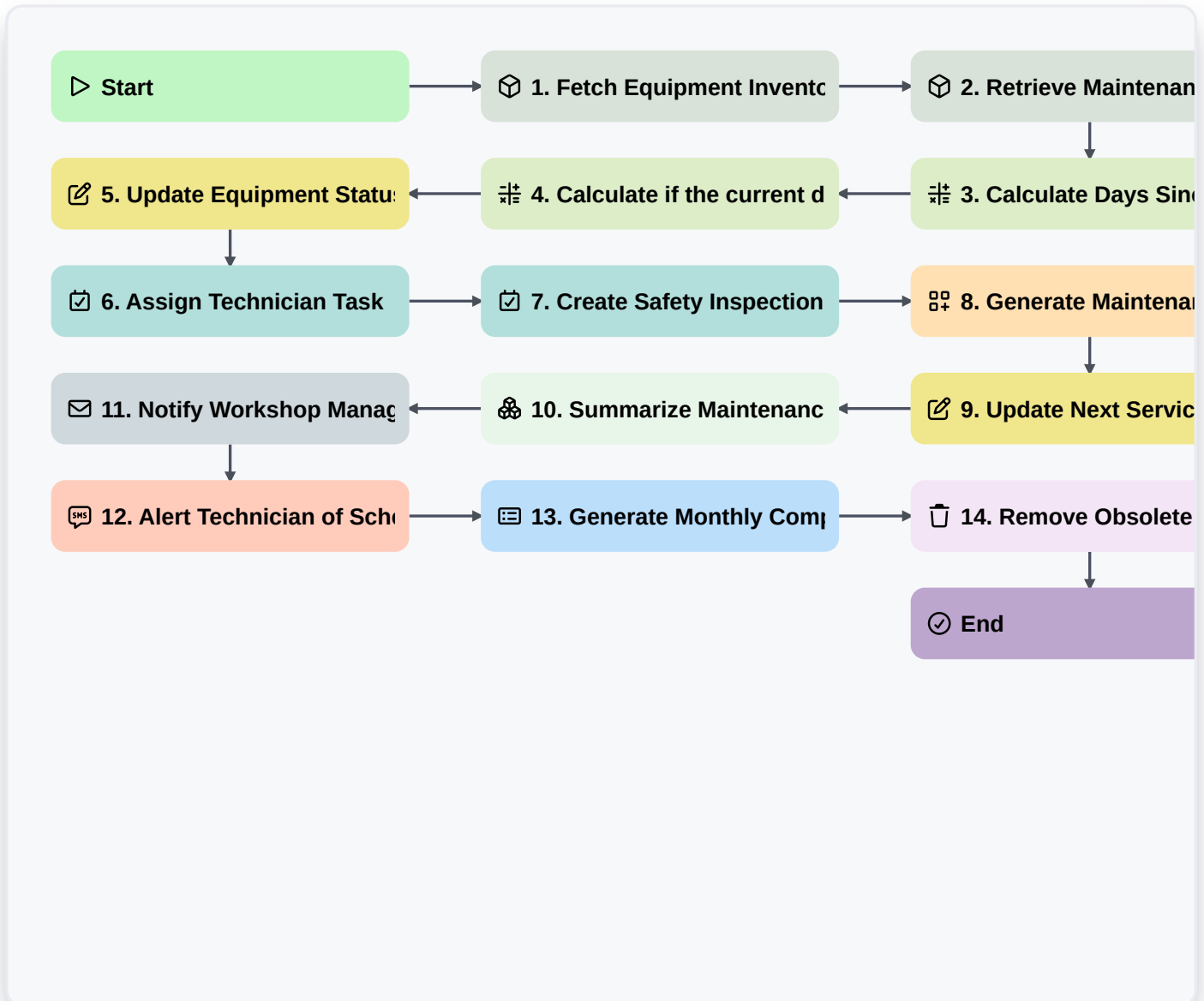


Automotive Workshop Equipment Maintenance Schedule



Start

Start of the Workflow/Process.

1. Fetch Equipment Inventory

Retrieve all active machinery and tools from the Equipment Data Model to identify items due for maintenance.

2. Retrieve Maintenance Logs

Get the history of previous maintenance entries to check for recurring issues or missed cycles.

3. Calculate Days Since Last Service

Subtract the 'Last Service Date' from the 'Current Date' to determine the age of the current service interval.

4. Calculate if the current date ...

Calculate if the current date exceeds the 'Next Service Due' date based on usage or time intervals.

5. Update Equipment Status

Update the 'Status' field of the equipment to 'Under Maintenance' once the process begins.



6. Assign Technician Task

Create a task for the Head Mechanic to perform the physical inspection and lubrication of the equipment.

7. Create Safety Inspection Checklist

Generate a task containing a mandatory checklist for safety compliance and part wear assessment.

8. Generate Maintenance Record

Create a new entry in the 'Maintenance Logs' data model documenting the completed work, parts replaced, and technician notes.

9. Update Next Service Date

Update the 'Next Service Due' field in the Equipment Data Model based on the newly completed service interval.

10. Summarize Maintenance Costs

Aggregate the total cost of parts and labor from the recent maintenance entries to track monthly maintenance spend.

11. Notify Workshop Manager

Send an email to the Workshop Manager once the maintenance task is completed and the equipment is back in service.

12. Alert Technician of Schedule Change

Send an SMS to the technician if an urgent/emergency maintenance task is created.

13. Generate Monthly Compliance Report

Create a report summarizing all completed maintenance tasks and equipment downtime for the monthly audit.

14. Remove Obsolete Maintenance Reminders

Delete outdated or redundant maintenance reminder entries that are no longer relevant to the current equipment fleet.

End

End of the Workflow/Process.