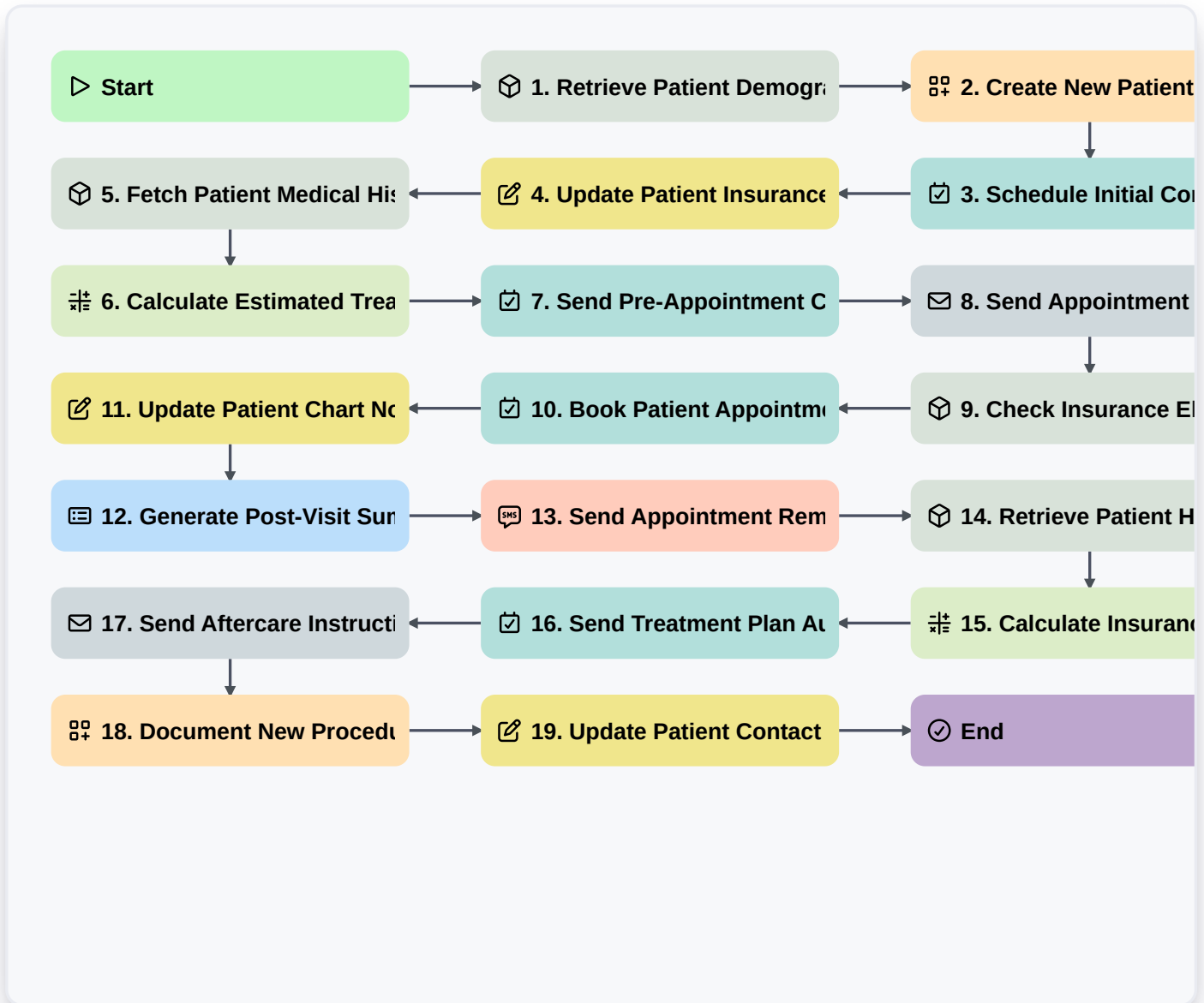


Comprehensive Dental Practice Workflow: Ultimate Guide To Modern Management



▷ **Start**

Start of the Workflow/Process.

 **1. Retrieve Patient Demographic Data**

Gather essential patient information for new or existing records.

 **2. Create New Patient Profile**

Automatically generate and save a new patient record using collected data.

 **3. Schedule Initial Consultation Task**

Assign a task to the front desk staff to confirm the first appointment booking.

 **4. Update Patient Insurance Details**

Modify or add current dental insurance information on file.

 **5. Fetch Patient Medical History**

Retrieve and verify the patient's complete medical history.

6. Calculate Estimated Treatment Cost

Calculate preliminary cost estimates based on proposed procedures.

7. Send Pre-Appointment Confirmation Task

Automate sending reminders to the patient before their visit.

8. Send Appointment Confirmation Email

Automatically send confirmation emails to patients for scheduled appointments.

9. Check Insurance Eligibility

Verify real-time insurance coverage and co-pays.

10. Book Patient Appointment

Assign and confirm the patient's appointment slot in the schedule.

11. Update Patient Chart Notes

Log all clinical notes and findings from the dental visit.

12. Generate Post-Visit Summary Report

Automatically compile key data points after a service is completed.

13. Send Appointment Reminder Text

Trigger SMS notifications to patients regarding upcoming visits.

14. Retrieve Patient History for Review

Access necessary past records during the consultation.

15. Calculate Insurance Adjustments

Perform necessary calculations for billing adjustments and copays.

16. Send Treatment Plan Authorization Request

Task the front office to request necessary pre-authorizations from dental insurance.

17. Send Aftercare Instructions Email

Provide automated aftercare instructions following treatment completion.

18. Document New Procedure Codes

Input all services rendered and associated CDT codes into the patient's file.

19. Update Patient Contact Information

Ensure the accuracy of patient demographics and emergency contacts.

End

Start of the Workflow/Process.