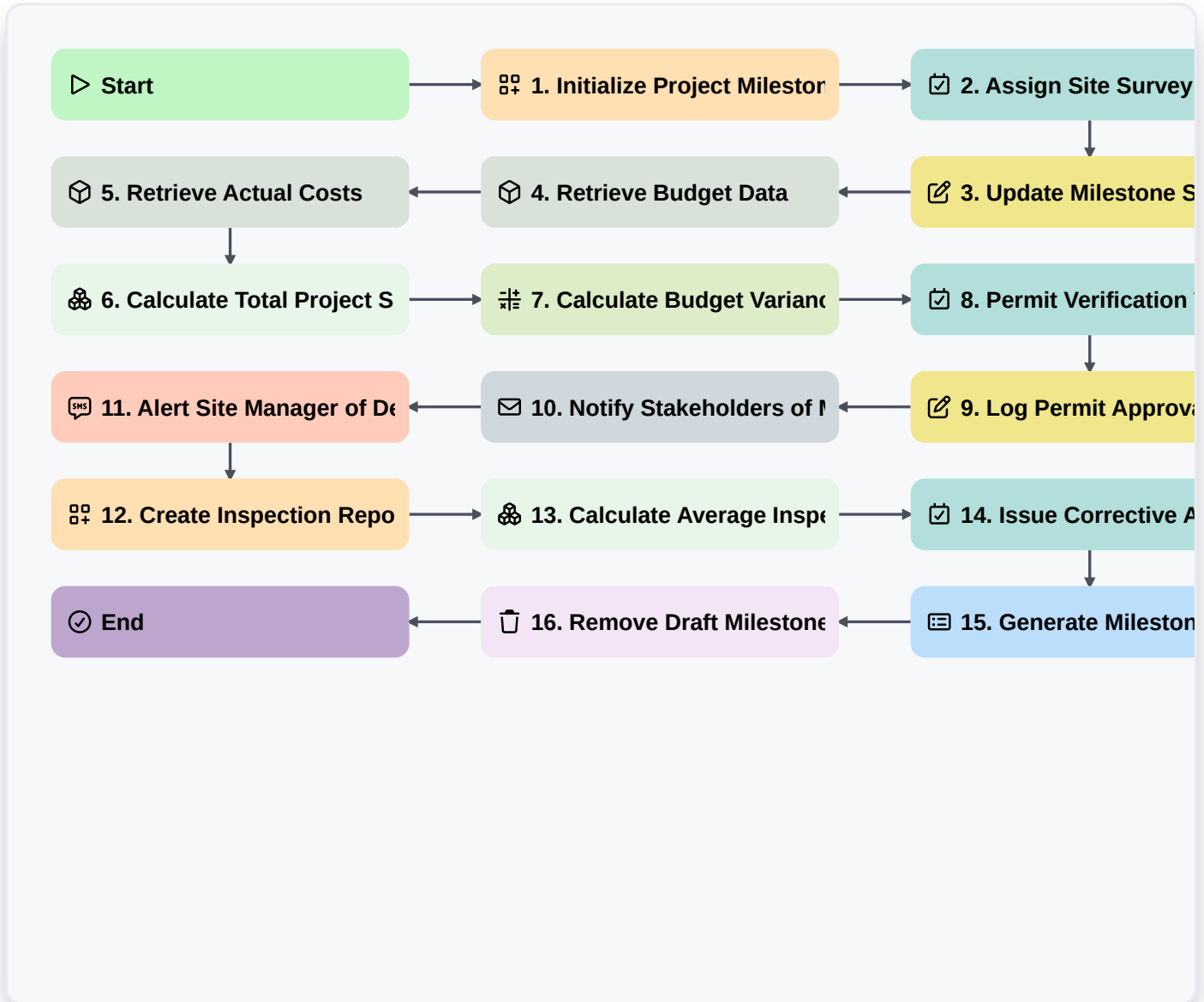


Construction Project Milestone Tracking Process



Start

Start of the Workflow/Process.

1. Initialize Project Milestone Record

Create a new entry in the 'Project Milestones' data model to track the start of the construction phase.

2. Assign Site Survey Task

Create a task for the Site Engineer to perform the initial site inspection and measurements.

3. Update Milestone Status to 'In Progress'

Update the status field of the Project Milestone entry to reflect that work has commenced.

4. Retrieve Budget Data

Get the allocated budget value from the 'Project Financials' data model.

5. Retrieve Actual Costs

Get all current expense entries related to the project to compare against the budget.



6. Calculate Total Project Spend

Sum all 'Cost' properties from the 'Project Expenses' data model entries.

7. Calculate Budget Variance

Calculate the difference between the 'Retrieved Budget' and the 'Total Project Spend' (Budget - Total Spend).

8. Permit Verification Task

Create a task for the Compliance Officer to verify all local construction permits are valid.

9. Log Permit Approval

Update the 'Permit Status' field in the Project Milestone entry to 'Verified'.

10. Notify Stakeholders of Milestone Completion

Send an email to the Project Owner and Investors informing them that a specific milestone has been reached.

11. Alert Site Manager of Delay

Send an SMS to the Site Manager if a critical milestone date has passed without completion.

12. Create Inspection Report Entry

Create a new entry in the 'Quality Inspection' data model following a site walkthrough.

13. Calculate Average Inspection Score

Calculate the average value of 'Quality Score' from all inspection entries for the current milestone.

14. Issue Corrective Actions

If inspection scores are low, create tasks for the Subcontractors to fix identified issues.

15. Generate Milestone Progress Report

Generate a visual report summarizing completed tasks, budget spend, and upcoming milestones.

16. Remove Draft Milestone Entries

Delete any duplicate or abandoned draft entries in the Milestone data model created during the planning phase.

End

End of the Workflow/Process.