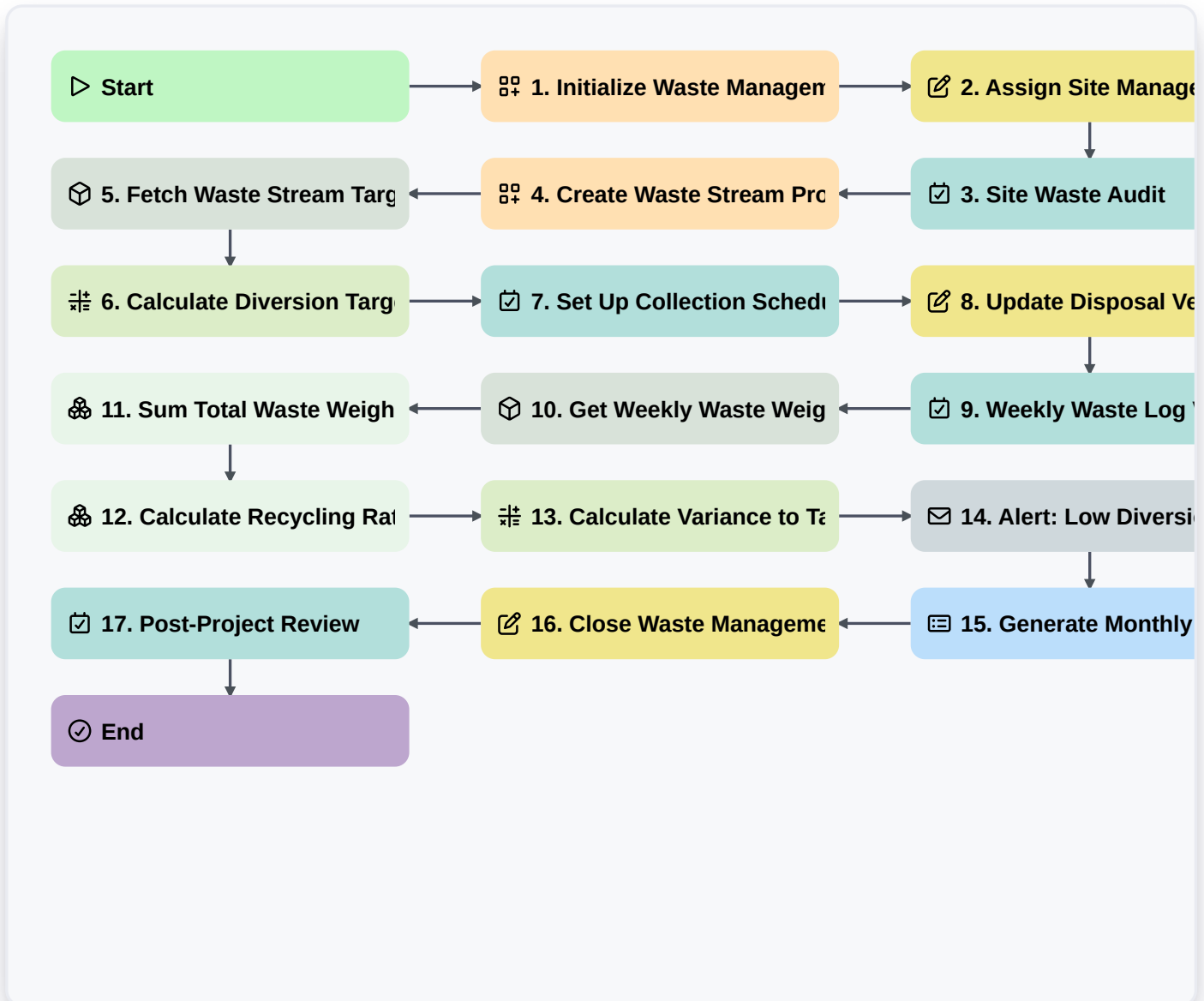


Construction Waste Management And Sustainability Process



▷ Start

Start of the Workflow/Process.

🗄️ 1. Initialize Waste Management Plan

Create a new Waste Management Plan entry for a specific construction site.

✍️ 2. Assign Site Manager

Update the Waste Management Plan entry with the assigned personnel responsible for site oversight.

📝 3. Site Waste Audit

Create a task for the Site Manager to conduct an initial audit of expected waste streams (concrete, wood, metal, etc.).

🗄️ 4. Create Waste Stream Profile

Create individual entries for each identified waste type (e.g., 'Timber', 'Hazardous', 'Steel') linked to the main Plan.

📦 5. Fetch Waste Stream Targets

Retrieve existing sustainability target values from the Global Sustainability Standards data model.



6. Calculate Diversion Target

Calculate the required diversion rate percentage based on the total estimated waste volume.

7. Set Up Collection Schedule

Create a task to coordinate with third-party waste contractors for regular pickups.

8. Update Disposal Vendor

Link a specific vendor entry to the Waste Stream Profile for a specific waste type.

9. Weekly Waste Log Verification

Create a recurring weekly task to verify that all waste transfer notes have been uploaded.

10. Get Weekly Waste Weights

Retrieve all weight entries recorded in the Waste Logs for the current week.

11. Sum Total Waste Weight

Sum the weight property of all waste entries for the current period to calculate total site impact.

12. Calculate Recycling Rate

Aggregate weight of recycled materials vs. total waste weight to determine the percentage of diversion.

13. Calculate Variance to Target

Compare the actual recycling rate against the initial diversion target to find the percentage gap.

14. Alert: Low Diversion Rate

Send an email to the Sustainability Officer if the calculated recycling rate falls below the threshold.

15. Generate Monthly Sustainability Report

Create a comprehensive report summarizing waste volumes, costs, and diversion success for stakeholders.

16. Close Waste Management Plan

Update the status of the Waste Management Plan to 'Completed' once the project is finished.

17. Post-Project Review

Create a task for the Project Lead to document 'Lessons Learned' regarding waste reduction.

End

End of the Workflow/Process.