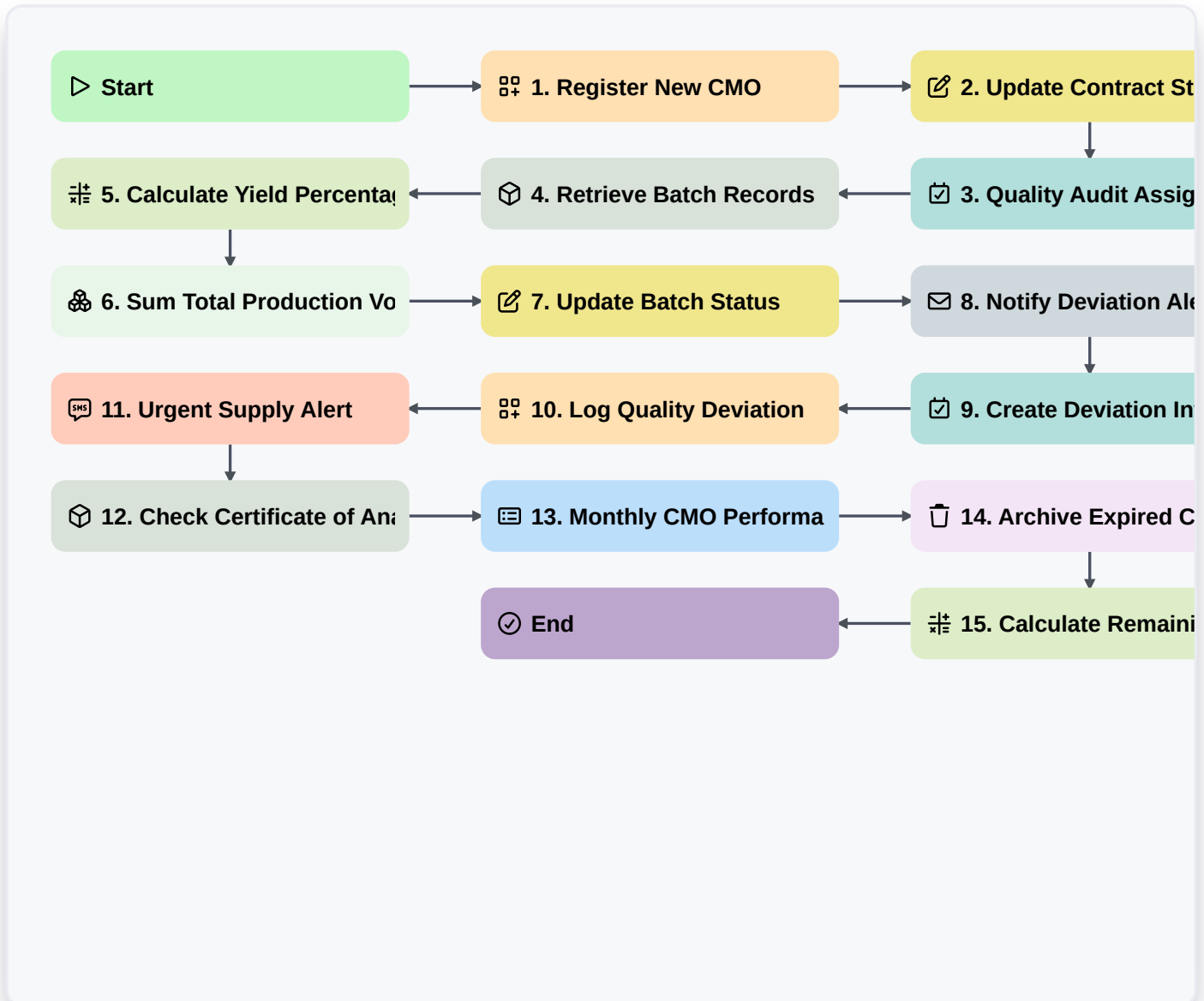


Contract Manufacturing Organization (CMO) Management



▶ Start

Start of the Workflow/Process.

🗄️ 1. Register New CMO

Create a new entry in the 'CMO Master Data' model when a new manufacturer is onboarded.

✍️ 2. Update Contract Status

Update the legal status (e.g., Active, Under Review, Terminated) in the Contract data model.

📋 3. Quality Audit Assignment

Create a task for the Quality Assurance team to perform a site audit on the CMO.

📦 4. Retrieve Batch Records

Fetch all batch manufacturing records associated with a specific Product ID.

📊 5. Calculate Yield Percentage

Calculate the manufacturing yield by comparing Input Quantity vs. Output Quantity.



6. Sum Total Production Volume

Aggregate all completed batch entries to find the total volume produced in a specific period.

7. Update Batch Status

Change the status of a batch from 'In-Progress' to 'Quarantine' or 'Released'.

8. Notify Deviation Alert

Send an automated email to the Production Manager when a deviation is recorded in a batch.

9. Create Deviation Investigation Task

Generate a high-priority task for the QA team when a batch fails specification.

10. Log Quality Deviation

Create a new entry in the 'Deviations' data model when an incident is identified.

11. Urgent Supply Alert

Send an SMS to the Supply Chain Lead if stock levels at the CMO fall below the safety threshold.

12. Check Certificate of Analysis (CoA)

Retrieve the latest CoA document/data from the Batch entry to verify compliance.

13. Monthly CMO Performance Report

Generate a summary report aggregating KPIs like Lead Time, Yield, and Deviation Rate.

14. Archive Expired Contract

Remove or flag expired contract entries from the active monitoring view.

15. Calculate Remaining Shelf Life

Calculate the remaining stability period by subtracting current date from Expiry Date.

End

End of the Workflow/Process.