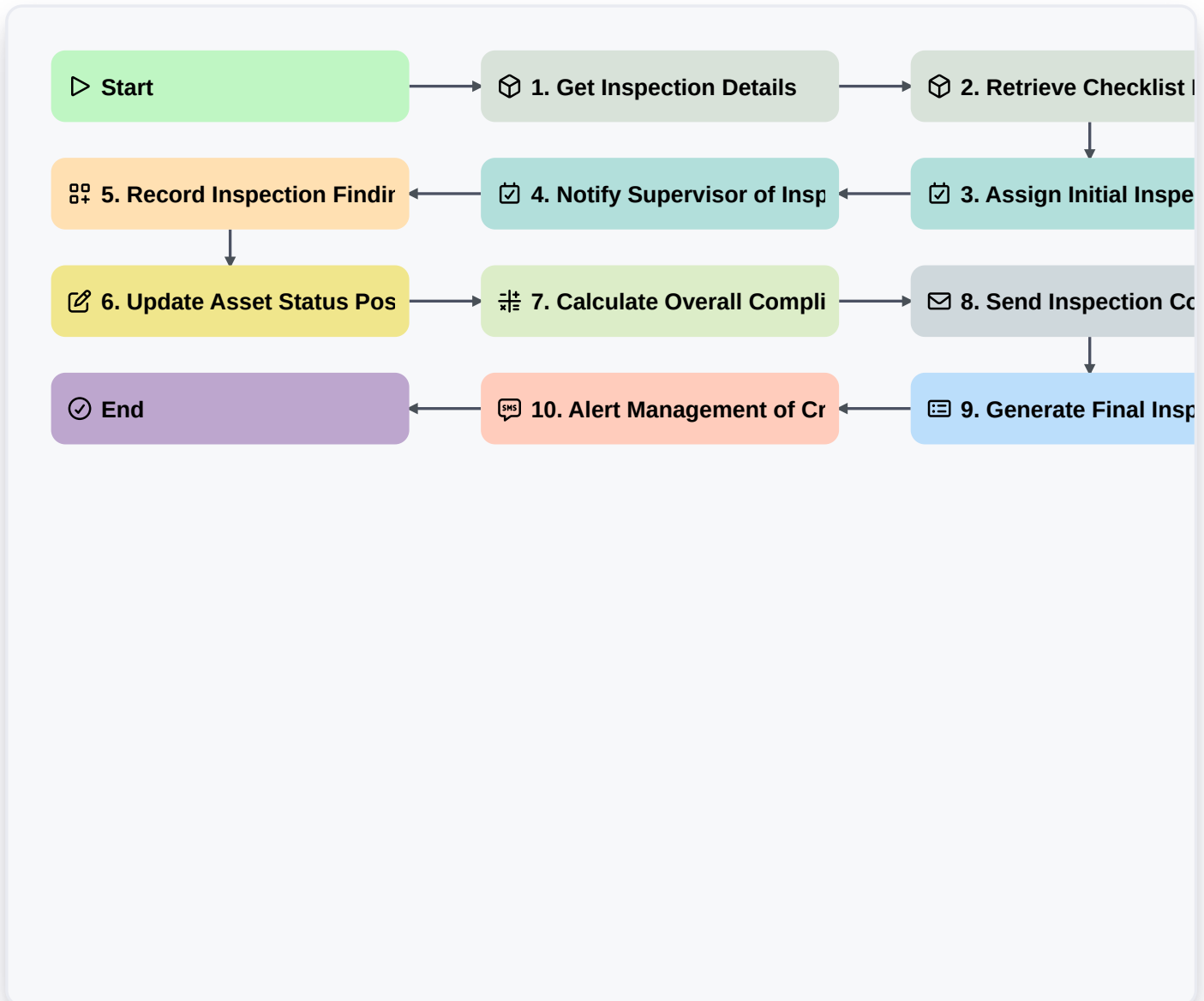


Digital Inspection Workflow Automation For Enhanced Quality Control



▶ Start

Start of the Workflow/Process.

📦 1. Get Inspection Details

Retrieve baseline inspection data (e.g., asset ID, location) using specific filters.

📦 2. Retrieve Checklist Data

Fetch predefined inspection checklist items and required fields for the specific inspection type.

📋 3. Assign Initial Inspection Task

Automatically create the primary task for the inspector, setting due dates and ownership.

📋 4. Notify Supervisor of Inspection Start

Create a follow-up task for the supervisor to monitor the inspection progress.

📋 5. Record Inspection Findings

Allow the inspector to create a new entry for each checklist item, logging observations and pass/fail status.

6. Update Asset Status Post-Inspection

Update the master data model record to reflect the overall pass/fail status of the inspected asset.

7. Calculate Overall Compliance Score

Execute a formula to determine a final compliance percentage based on all recorded findings.

8. Send Inspection Completion Email

Send a summary email to stakeholders upon successful workflow completion, including initial report data.

9. Generate Final Inspection Report

Compile all gathered data entries, calculations, and checklists into a structured, immutable PDF report.

10. Alert Management of Critical Failure

Send an immediate SMS alert to management if any mandatory critical check fails during the inspection.

End

Start of the Workflow/Process.