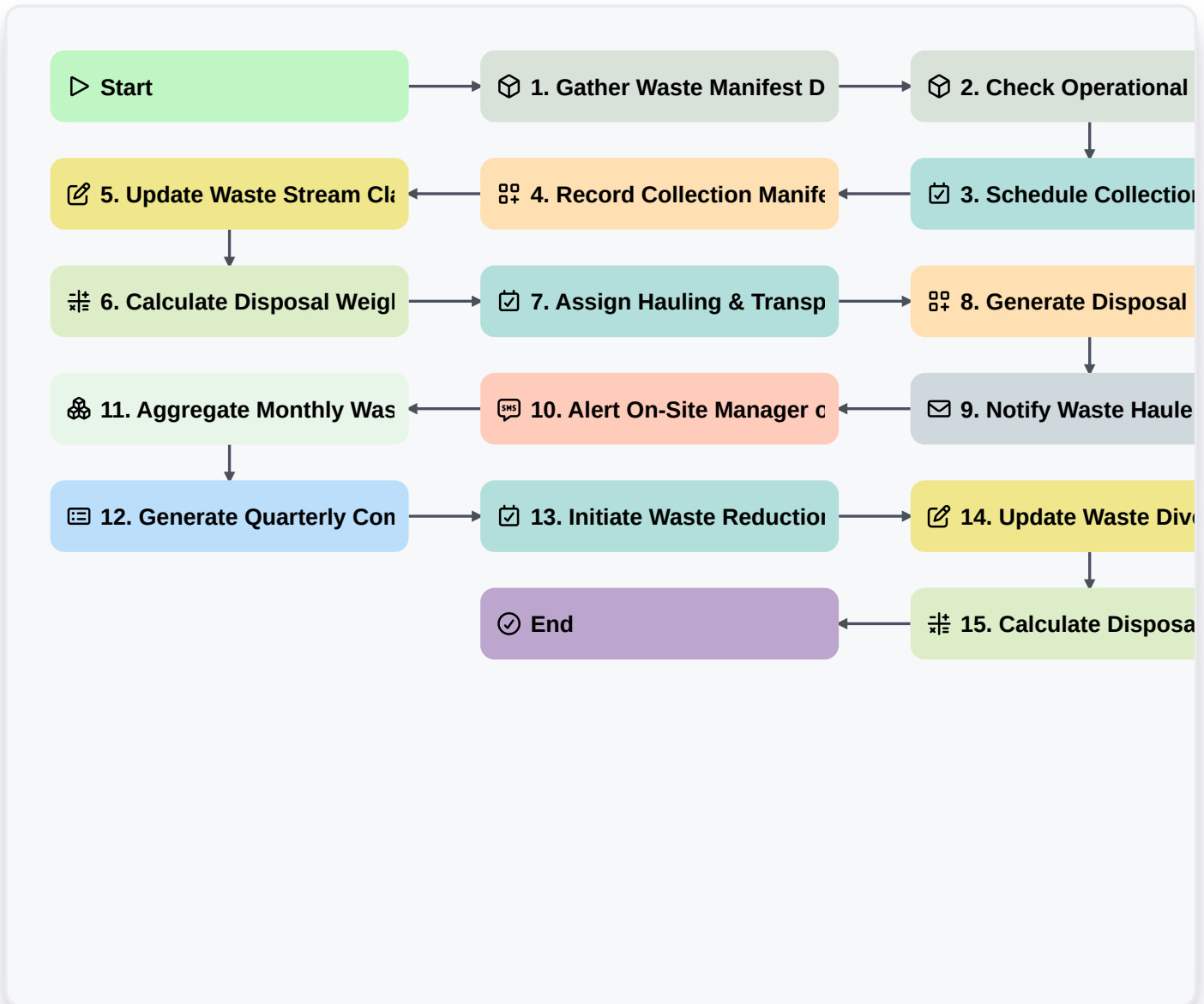


End-To-End Waste Management Workflow Solution For Optimal Compliance And Efficiency



Start

Start of the Workflow/Process.

1. Gather Waste Manifest Data

Retrieve initial waste generation and source data from the designated data model.

2. Check Operational Permits Status

Fetch current compliance documentation and permit expiry dates from the regulatory model.

3. Schedule Collection Service Task

Automatically create a task assigned to the collection crew based on the waste type and volume estimate.

4. Record Collection Manifest

Create a new manifest record capturing collection details (date, volume, location).

5. Update Waste Stream Classification

Modify the initial waste entry if the collected waste type differs from the forecast.

6. Calculate Disposal Weight Tonnage

Execute formulas to calculate the total weight/tonnage needing disposal (e.g., Volume * Density).

7. Assign Hauling & Transport Task

Generate and assign the transportation task to the hauling contractor.

8. Generate Disposal Site Receipt

Create a record verifying the acceptance of waste at the TSD/Recycling facility.

9. Notify Waste Hauler of Service Order

Send automated email confirmation and service details to the contracted hauler.

10. Alert On-Site Manager of Collection Confirmation

Send instant SMS alert to the site manager upon successful completion of collection.

11. Aggregate Monthly Waste Metrics

Calculate total weight, volume, and cost across all waste streams for monthly reporting.

12. Generate Quarterly Compliance Report

Compile necessary data points (permits, receipts, manifests) to create the regulatory compliance report.

13. Initiate Waste Reduction Review Task

Assign a follow-up task to the sustainability team to review waste sources for reduction opportunities.

14. Update Waste Diversion Rate

Update the overall site performance data with the percentage of diverted waste.

15. Calculate Disposal Cost Estimate

Determine the estimated cost per ton based on current market rates and projected waste volume.

End

Start of the Workflow/Process.