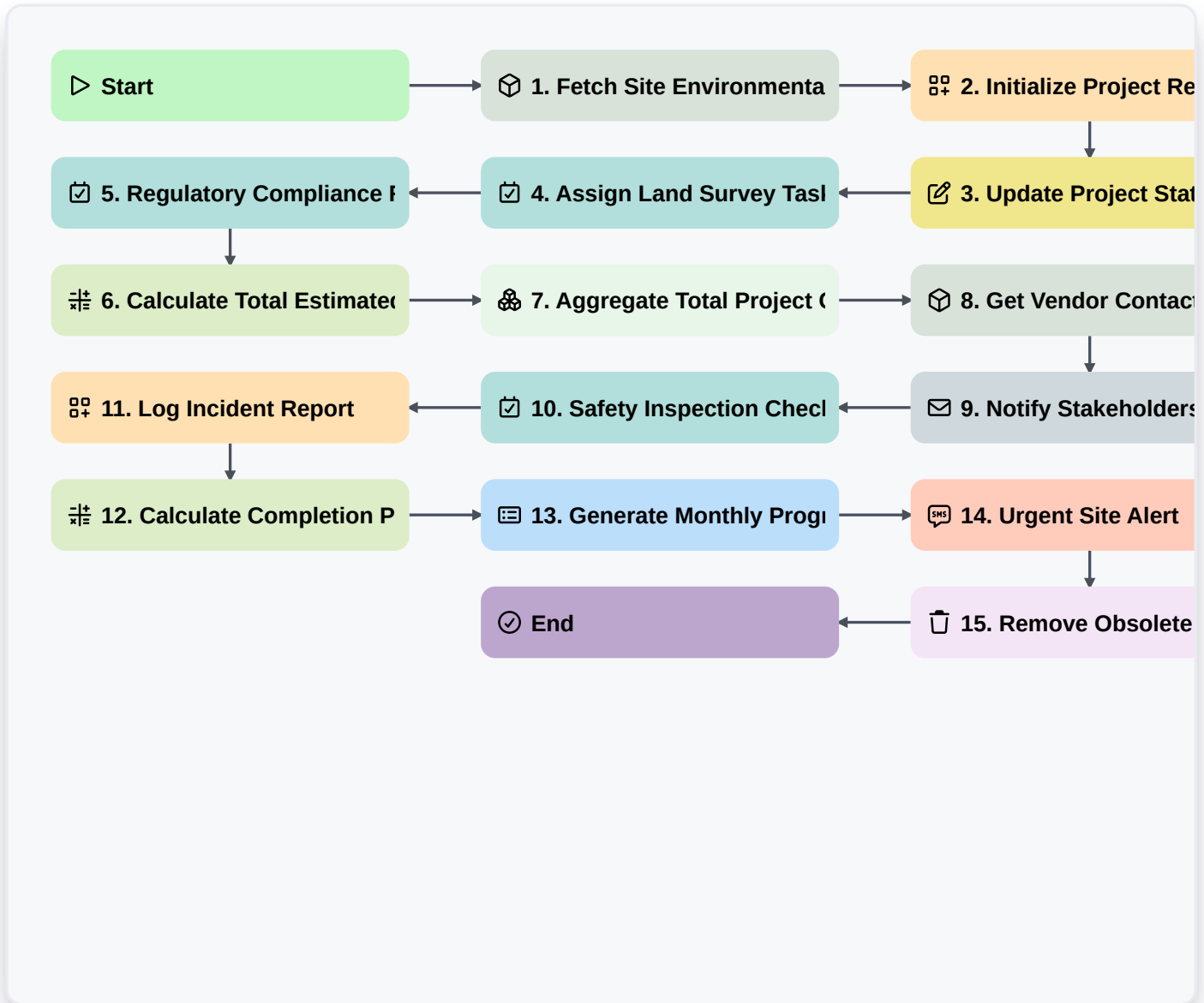


Energy Infrastructure Project Management



Start

Start of the Workflow/Process.

1. Fetch Site Environmental Permits

Retrieve all existing environmental permit entries associated with the specific project site.

2. Initialize Project Record

Create a new entry in the 'Energy Projects' data model to track the lifecycle of the new infrastructure site.

3. Update Project Status

Update the status of the Project entry to 'In Progress' once the initial feasibility study is complete.

4. Assign Land Survey Task

Create a task for the Engineering Team to perform a topographical land survey of the designated coordinates.

5. Regulatory Compliance Review

Create a task for the Legal Department to review local zoning and energy regulations.

6. Calculate Total Estimated Load

Execute a formula to calculate the total power capacity by summing the capacities of all planned turbine/solar unit entries.



7. Aggregate Total Project Cost

Sum the 'Cost' property from all related 'Procurement' and 'Labor' entries to provide a total budget overview.

8. Get Vendor Contact Details

Retrieve contact information from the 'Vendors' data model for the selected transformer supplier.

9. Notify Stakeholders of Milestone

Send an automated email to the Project Steering Committee when the 'Construction Ready' milestone is reached.

10. Safety Inspection Checklist

Create a task for the Site Manager containing the mandatory safety and structural integrity checklists.

11. Log Incident Report

Create an entry in the 'Safety Incidents' data model if a hazard is identified during site inspection.

12. Calculate Completion Percentage

Calculate the ratio of completed tasks to total project tasks to determine overall progress percentage.

13. Generate Monthly Progress Report

Create a summary report pulling data from project milestones, budget aggregates, and completed tasks for monthly review.

14. Urgent Site Alert

Send an SMS alert to the On-call Engineer in the event of a critical equipment failure recorded in the data entry.

15. Remove Obsolete Permits

Delete permit entries from the data model that have been explicitly invalidated by new regulatory rulings.

End

End of the Workflow/Process.