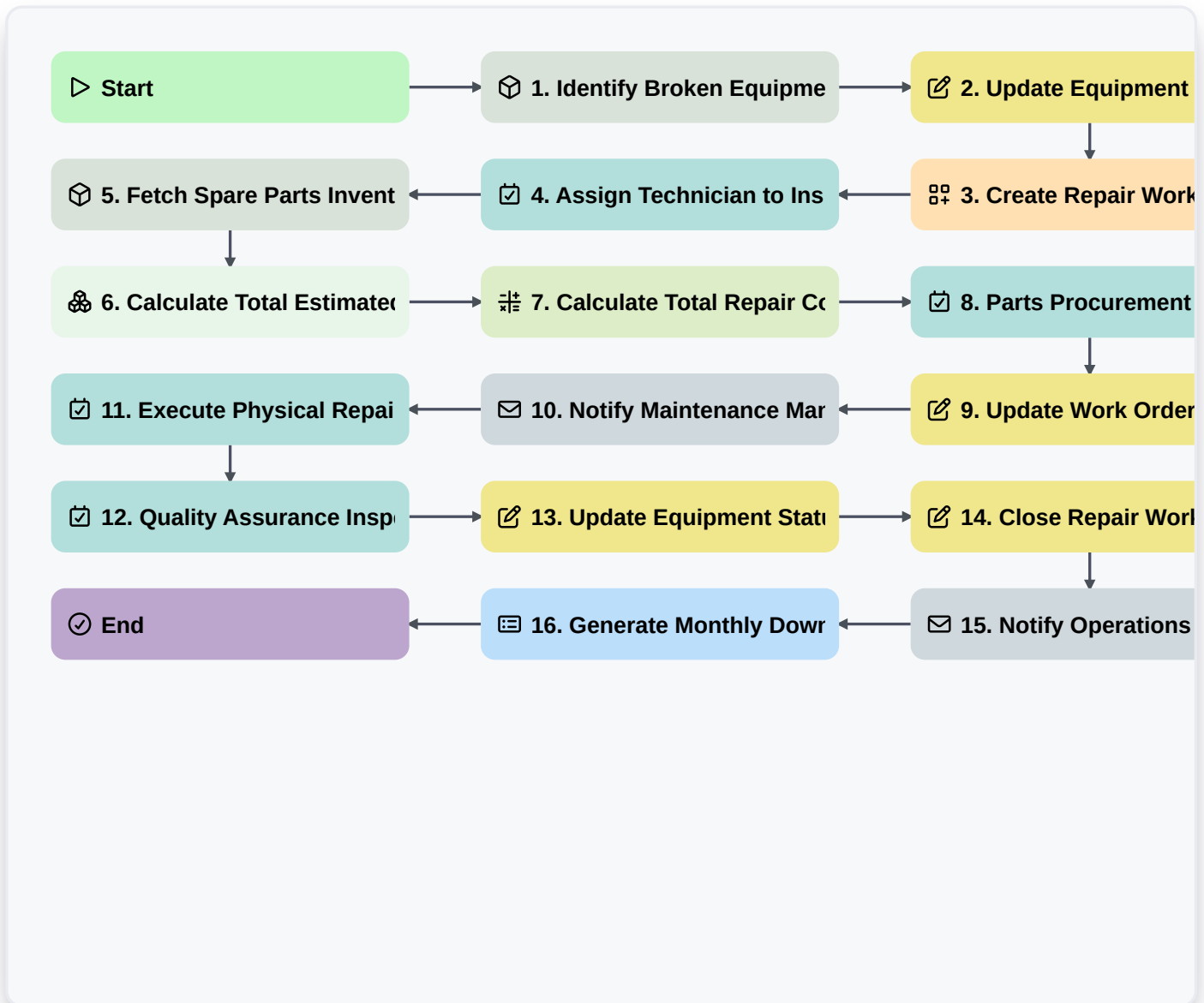


Equipment Breakdown Repair Workflow



▷ Start

Start of the Workflow/Process.

📦 1. Identify Broken Equipment

Retrieve the specific equipment record from the Equipment Data Model that has been flagged as 'Broken'.

✍️ 2. Update Equipment Status to 'Under Repair'

Update the status field of the identified equipment entry to reflect that repair has commenced.

📋 3. Create Repair Work Order

Generate a new entry in the Repair Work Orders data model, linking it to the broken equipment ID.

📋 4. Assign Technician to Inspection

Create a task for the Maintenance Team to perform an initial diagnostic inspection of the equipment.

📦 5. Fetch Spare Parts Inventory

Retrieve all available parts from the Inventory Data Model that are compatible with the broken equipment.

🔗 6. Calculate Total Estimated Parts Cost

Sum the 'unit_price' of all parts identified as necessary for the repair from the parts list.



⚙️ 7. Calculate Total Repair Cost

Calculate the sum of total parts cost plus the allocated labor cost (Parts_Cost + Labor_Cost).

📅 8. Parts Procurement Task

Create a task for the Procurement Officer if required parts are not currently in stock.

✍️ 9. Update Work Order with Cost Estimate

Update the Repair Work Order entry with the calculated total estimated repair cost.

✉️ 10. Notify Maintenance Manager

Send an email to the Maintenance Manager notifying them that a new repair work order has been created and costs are estimated.

📅 11. Execute Physical Repair

Create a task for the assigned Technician to perform the actual mechanical/electrical repair work.

📅 12. Quality Assurance Inspection

Create a task for a Supervisor to verify the repair meets safety standards.

✍️ 13. Update Equipment Status to 'Operational'

Once QA is passed, update the original Equipment entry status to 'Operational'.

✍️ 14. Close Repair Work Order

Update the Repair Work Order entry status to 'Closed'.

✉️ 15. Notify Operations Department

Send an email to the Operations Head to inform them that the equipment is back in service.

📄 16. Generate Monthly Downtime Report

Create a report aggregating all closed repair work orders from the current period to analyze equipment reliability.

🏁 End

End of the Workflow/Process.