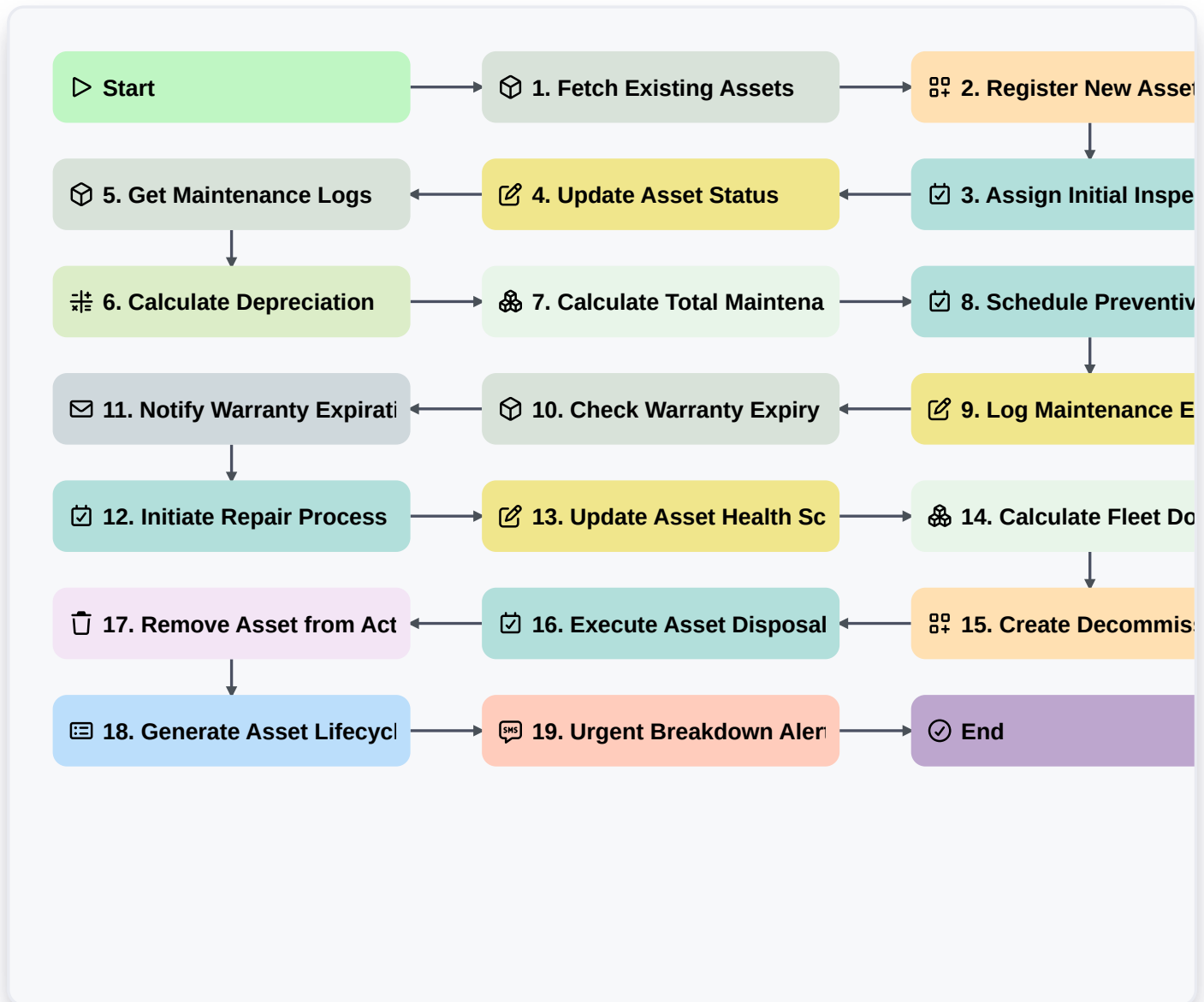


Farm Asset Lifecycle Management Process



Start

Start of the Workflow/Process.

1. Fetch Existing Assets

Retrieve all active assets from the Farm Asset Data Model to check for lifecycle stage.

2. Register New Asset

Create a new entry in the Asset Data Model when a new piece of equipment or livestock is acquired.

3. Assign Initial Inspection

Create a task for the Farm Manager to perform a physical inspection of the newly registered asset.

4. Update Asset Status

Update the status field in the Asset Data Model from 'Acquired' to 'Active' after inspection.

5. Get Maintenance Logs

Retrieve all historical maintenance entries associated with a specific Asset ID.

6. Calculate Depreciation

Execute a formula to calculate the current value of the asset based on age and original cost.



7. Calculate Total Maintenance Cost

Sum all cost entries from the Maintenance Log linked to a specific asset to determine total ownership cost.

8. Schedule Preventive Maintenance

Create a recurring task for technicians based on the asset's service interval.

9. Log Maintenance Event

Update the 'Last Service Date' and 'Next Service Date' in the Asset Data Model.

10. Check Warranty Expiry

Retrieve warranty end dates from the Asset Data Model to identify assets nearing coverage expiration.

11. Notify Warranty Expiration

Send an email alert to the Procurement Officer when an asset's warranty is within 30 days of expiring.

12. Initiate Repair Process

Create a task for the Maintenance Team when an asset is marked as 'Malfunctioning'.

13. Update Asset Health Score

Update the 'Health Rating' field in the Asset Data Model based on recent repair frequency.

14. Calculate Fleet Downtime

Calculate the average duration of 'Out of Service' status across all assets in a specific category.

15. Create Decommissioning Record

Create a record in the Disposal Data Model for assets that have reached end-of-life.

16. Execute Asset Disposal

Create a task for the Operations Lead to remove the asset from the farm premises.

17. Remove Asset from Active Inventory

Delete the asset entry from the 'Active Assets' view/model once disposal is confirmed.

18. Generate Asset Lifecycle Report

Create a comprehensive report summarizing acquisition, maintenance costs, and disposal rates for the fiscal year.

19. Urgent Breakdown Alert

Send an SMS to the Farm Supervisor when a critical asset (e.g., Tractor) is marked as 'Critical Failure'.

End

End of the Workflow/Process.