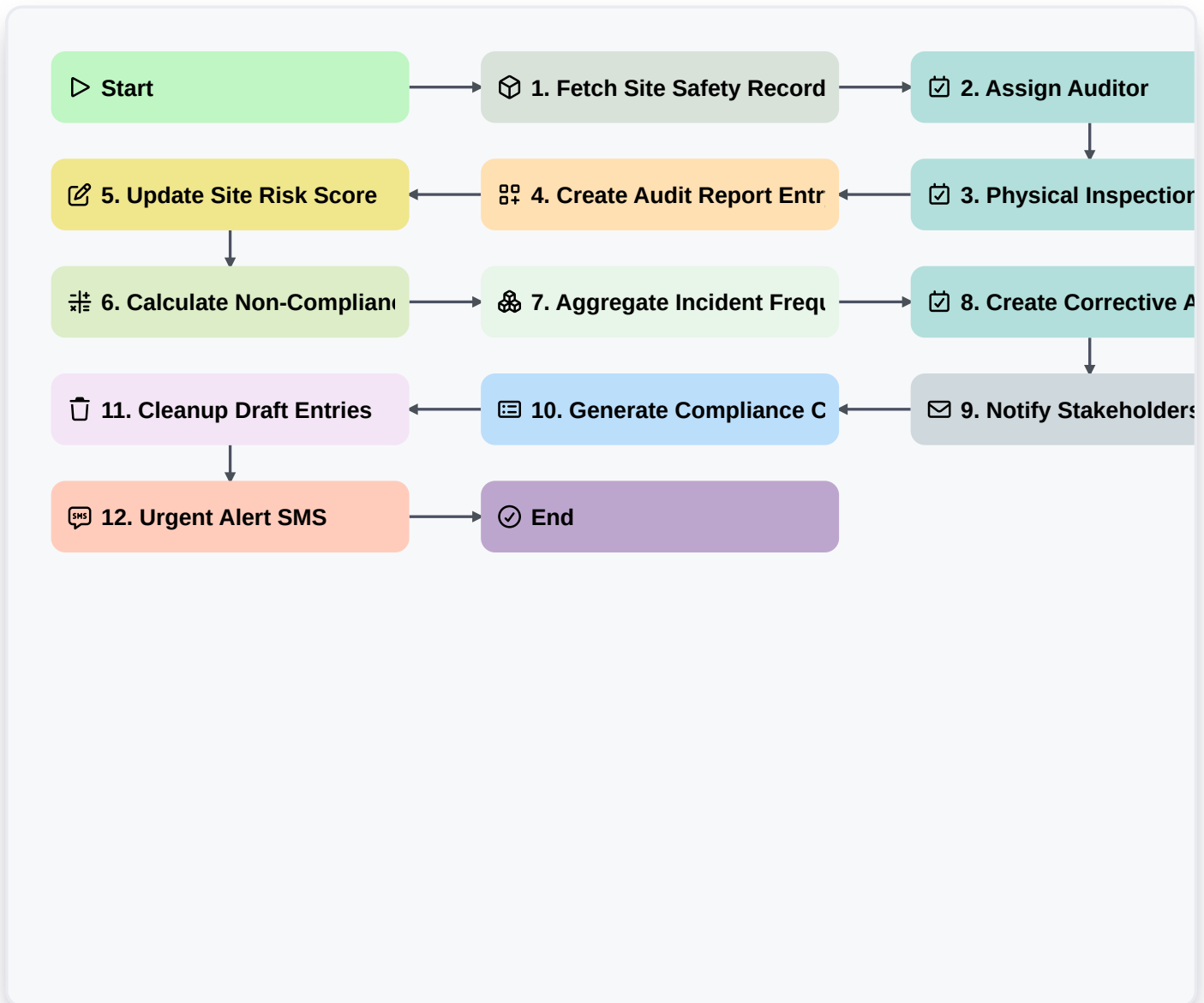


Health And Safety Compliance Audit Process



▷ Start

Start of the Workflow/Process.

📦 1. Fetch Site Safety Records

Retrieve all previous safety audit entries from the Audit Data Model for the specific site being inspected.

✅ 2. Assign Auditor

Create a task for the Safety Officer to begin the physical site walkthrough.

✅ 3. Physical Inspection Checklist

A granular list of items to verify, including fire extinguisher expiry, PPE availability, and clear emergency exits.

📋 4. Create Audit Report Entry

Generate a new record in the Audit Data Model containing the findings, date, and inspector name.

✍️ 5. Update Site Risk Score

Update the 'Current Risk Level' field in the Site Data Model based on the audit findings.

📊 6. Calculate Non-Compliance Rate

Execute a formula: $(\text{Number of failed checklist items} / \text{Total checklist items}) * 100$.



7. Aggregate Incident Frequency

Sum the total number of reported incidents from the Incident Data Model for the last 12 months.

8. Create Corrective Action Task

If a high-risk finding is identified, automatically create a task for the Facility Manager to remediate the issue.

9. Notify Stakeholders

Send an email summary of the Audit Results to the Health and Safety Director and Site Manager.

10. Generate Compliance Certificate

Create a PDF report summarizing the audit's pass/fail status and the calculated compliance score.

11. Cleanup Draft Entries

Delete any incomplete or abandoned audit drafts from the system to maintain data hygiene.

12. Urgent Alert SMS

Send an SMS alert to the Emergency Response Team if a 'Critical' non-compliance is logged.

End

End of the Workflow/Process.