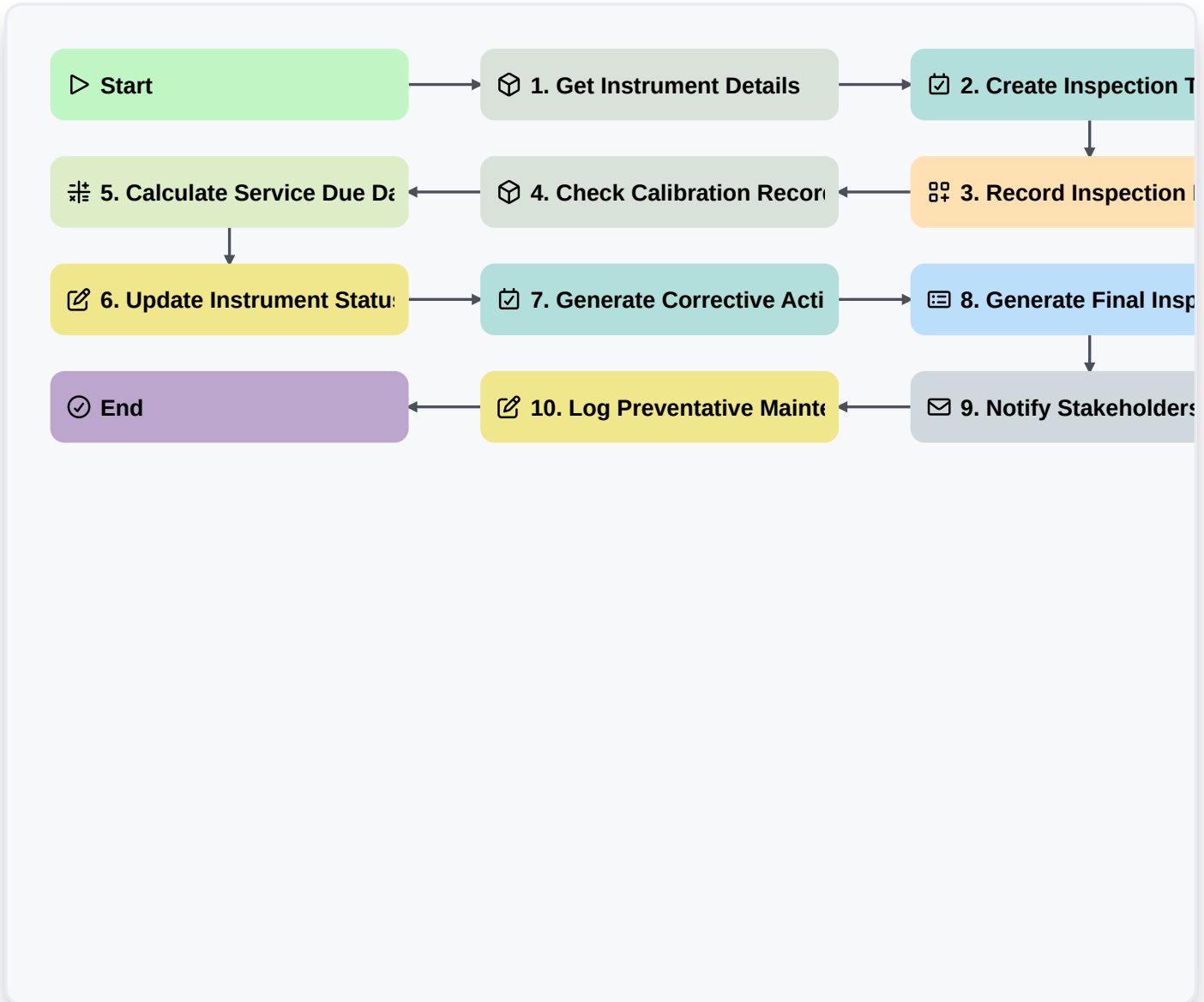


Laboratory Instrument Inspection Workflow: ELN & Regulated Testing Management



▷ **Start**

Start of the Workflow/Process.

 **1. Get Instrument Details**

Retrieve necessary instrument information (e.g., Serial Number, Model, Calibration Due Date) from the Instrument Master Data Model.

 **2. Create Inspection Task Assignment**

Assign the physical inspection task to the responsible technician or team.

 **3. Record Inspection Findings**

Data entry for inspection results, including Pass/Fail status, observations, and corrective actions.

 **4. Check Calibration Records**

Fetch the instrument's historical calibration data to determine service eligibility.

 **5. Calculate Service Due Date**

Automatically calculate the next required calibration date based on current service logs.

6. Update Instrument Status

Change the instrument's status (e.g., Operational, Needs Service, Out of Service) after inspection.

7. Generate Corrective Action Task

Automatically trigger a follow-up task for any failed inspection item.

8. Generate Final Inspection Report

Compile all inspection data, findings, and actions taken into a comprehensive, auditable report.

9. Notify Stakeholders of Inspection Completion

Send summary email report to Lab Manager and Quality Department upon completion.

10. Log Preventative Maintenance Actions

Record any minor maintenance tasks performed during the inspection process.

End

Start of the Workflow/Process.