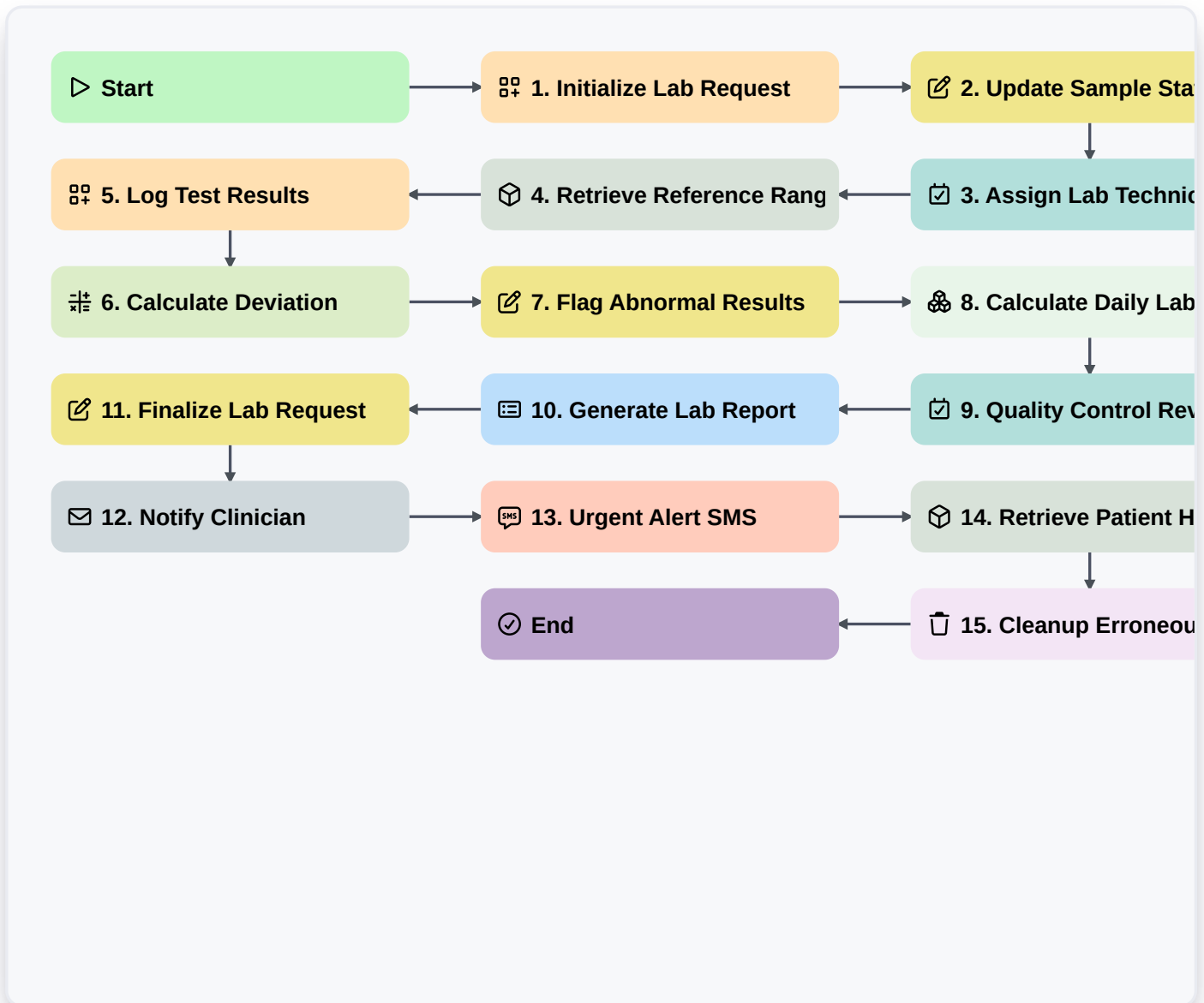


Laboratory Result Reporting And Tracking



▷ Start

Start of the Workflow/Process.

☰ 1. Initialize Lab Request

Create a new entry in the 'Lab Requests' data model when a sample is received.

✍ 2. Update Sample Status

Update the status of the Lab Request entry to 'In Progress' once testing begins.

☑ 3. Assign Lab Technician

Create a task assigned to a technician to perform the specific biological/chemical analysis.

📦 4. Retrieve Reference Ranges

Get reference range values from the 'Reference Standards' data model to compare against results.

☰ 5. Log Test Results

Create a new entry in the 'Test Results' data model containing the raw numerical values.

⚙ 6. Calculate Deviation

Execute a formula to calculate the difference between the observed result and the reference range.



7. Flag Abnormal Results

Update the 'Test Results' entry to mark it as 'Critical' or 'Abnormal' if the deviation exceeds thresholds.

8. Calculate Daily Lab Throughput

Aggregate the total number of completed test entries for the current date to monitor lab capacity.

9. Quality Control Review

Create a task for the Lab Manager to verify and sign off on abnormal results.

10. Generate Lab Report

Create a formal PDF/Digital report summarizing the findings for the specific Lab Request.

11. Finalize Lab Request

Update the original Lab Request entry status to 'Completed' and attach the report link.

12. Notify Clinician

Send an email to the requesting physician containing the finalized report and any critical alerts.

13. Urgent Alert SMS

Send an SMS notification to the On-Call Supervisor if a 'Critical' result is detected.

14. Retrieve Patient History

Get previous test entries for the same patient to identify longitudinal trends.

15. Cleanup Erroneous Entries

Delete duplicate or incorrectly logged test entries during the verification stage.

End

End of the Workflow/Process.