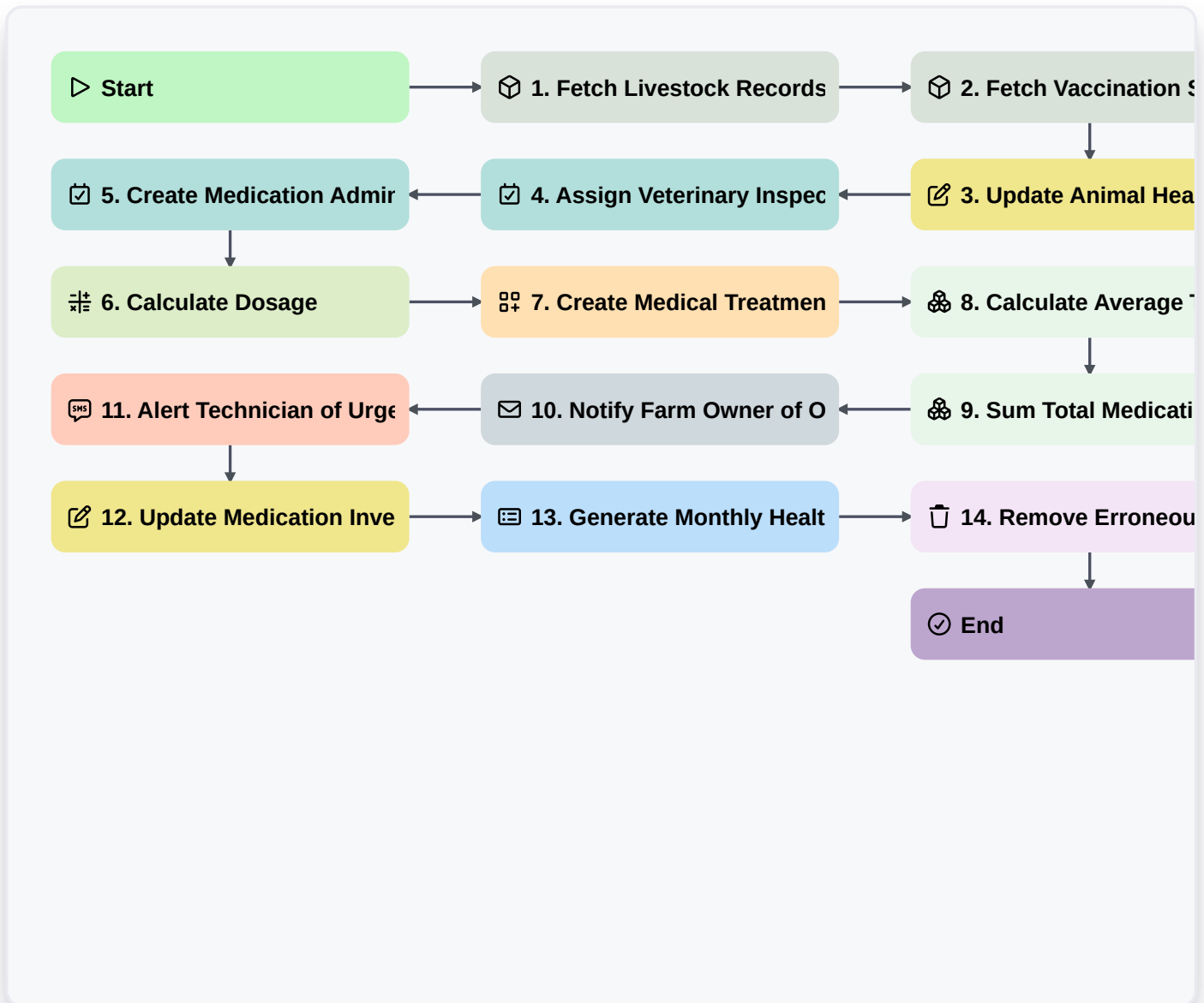


Livestock Health And Veterinary Care Process



▷ Start

Start of the Workflow/Process.

📦 1. Fetch Livestock Records

Retrieve all livestock entries from the 'Livestock Master' data model to identify animals due for checkups.

📦 2. Fetch Vaccination Schedule

Retrieve the predefined vaccination protocols from the 'Veterinary Protocols' data model.

✍️ 3. Update Animal Health Status

Update the 'Health Status' field in the specific Livestock entry (e.g., changing status from 'Healthy' to 'Under Treatment').

📋 4. Assign Veterinary Inspection Task

Create a task for the assigned Veterinarian to perform a physical examination on the identified livestock.

📋 5. Create Medication Administration Task

Create a task for the Farm Technician to administer the prescribed medication/vaccine.



6. Calculate Dosage

Calculate the required medication dosage based on the animal's weight retrieved from the data model (e.g., weight * mg_per_kg).

7. Create Medical Treatment Log

Create a new entry in the 'Treatment Logs' data model documenting the date, medication used, and veterinarian notes.

8. Calculate Average Temperature

Aggregate all recent temperature readings for a specific animal to determine if a fever trend is present.

9. Sum Total Medication Cost

Sum the costs of all medications used in the current treatment cycle for budget tracking.

10. Notify Farm Owner of Outbreak

Send an automated email to the owner if the health status of multiple animals is updated to 'Sick' within a short period.

11. Alert Technician of Urgent Task

Send an SMS to the Farm Technician when an emergency veterinary task is created.

12. Update Medication Inventory

Decrease the 'Stock Quantity' in the 'Medicine Inventory' data model after a dose is administered.

13. Generate Monthly Health Summary

Create a report summarizing all completed veterinary tasks and health trends for the month.

14. Remove Erroneous Entry

Delete a duplicate or incorrectly entered medical observation from the 'Health Logs' data model.

End

End of the Workflow/Process.