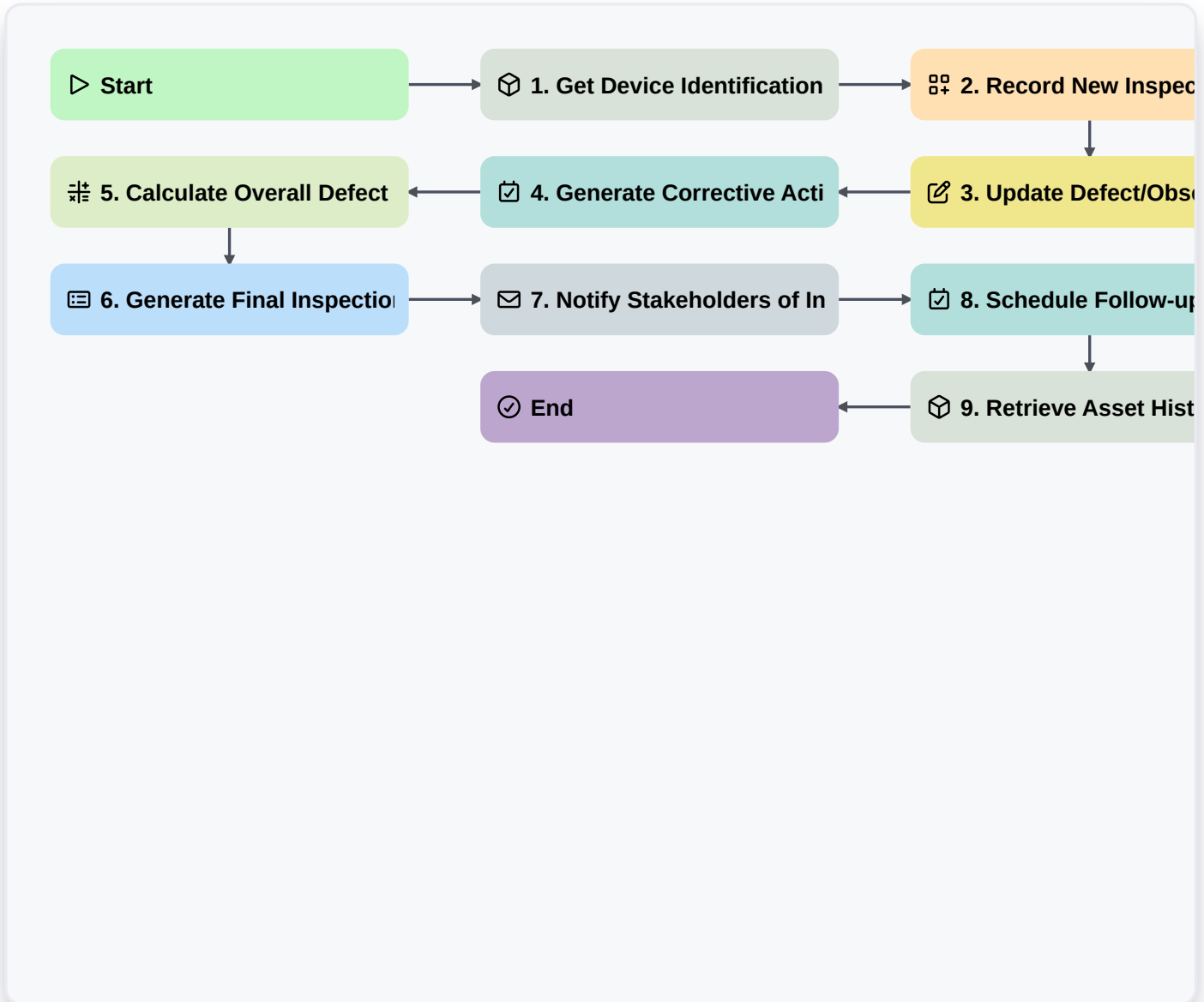


Medical Device Inspection Workflow: Digital Audit & Quality Management Solution



▷ **Start**

Start of the Workflow/Process.

 **1. Get Device Identification Data**

Retrieve necessary unique identifiers for the medical device being inspected (e.g., Serial Number, Model ID).

 **2. Record New Inspection Findings**

Create a structured entry to document observations, non-conformities, and evidence findings during the inspection.

 **3. Update Defect/Observation Status**

Modify the status of a recorded finding (e.g., Open -> Investigating -> Closed) and assign remediation owners.

 **4. Generate Corrective Action Tasks**

Automatically assign tasks to responsible personnel based on the inspection outcome (e.g., CAPA creation).

 **5. Calculate Overall Defect Density Score**

Execute formulas on collected inspection data to generate key performance indicators (KPIs) or risk scores.

☰ **6. Generate Final Inspection Report**

Compile all inspection entries, evidence, and corrective actions into a final, shareable quality report.

✉ **7. Notify Stakeholders of Inspection Completion**

Automatically send summary emails to managers and involved personnel with the final inspection results.

☑ **8. Schedule Follow-up Verification Task**

Create follow-up tasks to ensure all necessary remediation actions are verified post-inspection.

📦 **9. Retrieve Asset History Records**

Fetch the complete inspection history and maintenance records linked to a specific device or asset.

🏁 **End**

Start of the Workflow/Process.