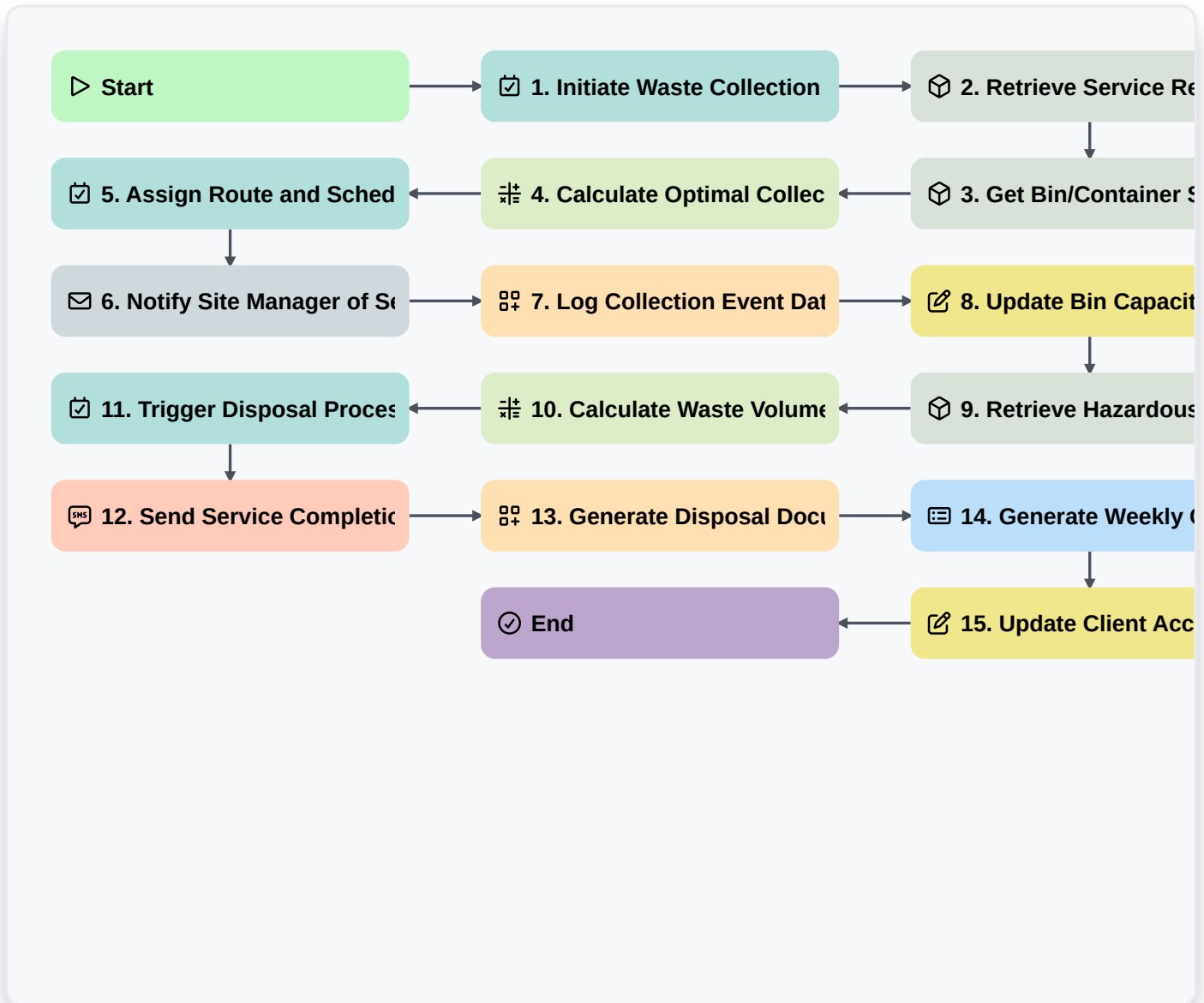


Optimized Waste Management Workflow: From Collection To Disposal Platform Guide



▷ **Start**

Start of the Workflow/Process.

☑ **1. Initiate Waste Collection Task**

Creates a task for the designated collection crew upon service request intake.

📦 **2. Retrieve Service Request Details**

Gathers essential data (location, waste type, volume estimate) from the initial service ticket/data model.

📦 **3. Get Bin/Container Status**

Checks current capacity levels and location details for the waste receptacle.

📍 **4. Calculate Optimal Collection Route Points**

Applies geospatial logic to determine the most efficient route based on multiple collection points.

☑ **5. Assign Route and Schedule Work Order**

Creates a multi-stop work order/route manifest for the collection team.

 **6. Notify Site Manager of Service Confirmation**

Sends an automated email confirmation to the client/site manager detailing the service window.

 **7. Log Collection Event Data**

Creates a new record in the Waste Manifest data model upon completion of the service visit.

 **8. Update Bin Capacity Status**

Updates the inventory data model with the remaining capacity of the emptied container.

 **9. Retrieve Hazardous Material Guidelines**

Accesses the latest regulatory data model for handling specific waste streams (e.g., medical, chemical).

 **10. Calculate Waste Volume Metrics**

Determines total collected volume/weight and calculates associated service costs.

 **11. Trigger Disposal Processing Task**

Creates a task for the downstream transfer station or processing facility.

 **12. Send Service Completion Alert to Client**

Sends an SMS notification to the client confirming successful waste removal.

 **13. Generate Disposal Documentation Record**

Creates a permanent record linking the collection data to the final disposal certificate data model.

 **14. Generate Weekly Compliance Report**

Compiles all recent entries into a structured report for regulatory review.

 **15. Update Client Account Usage Summary**

Increments the total recorded waste service usage against the client's account ledger.

 **End**

Start of the Workflow/Process.