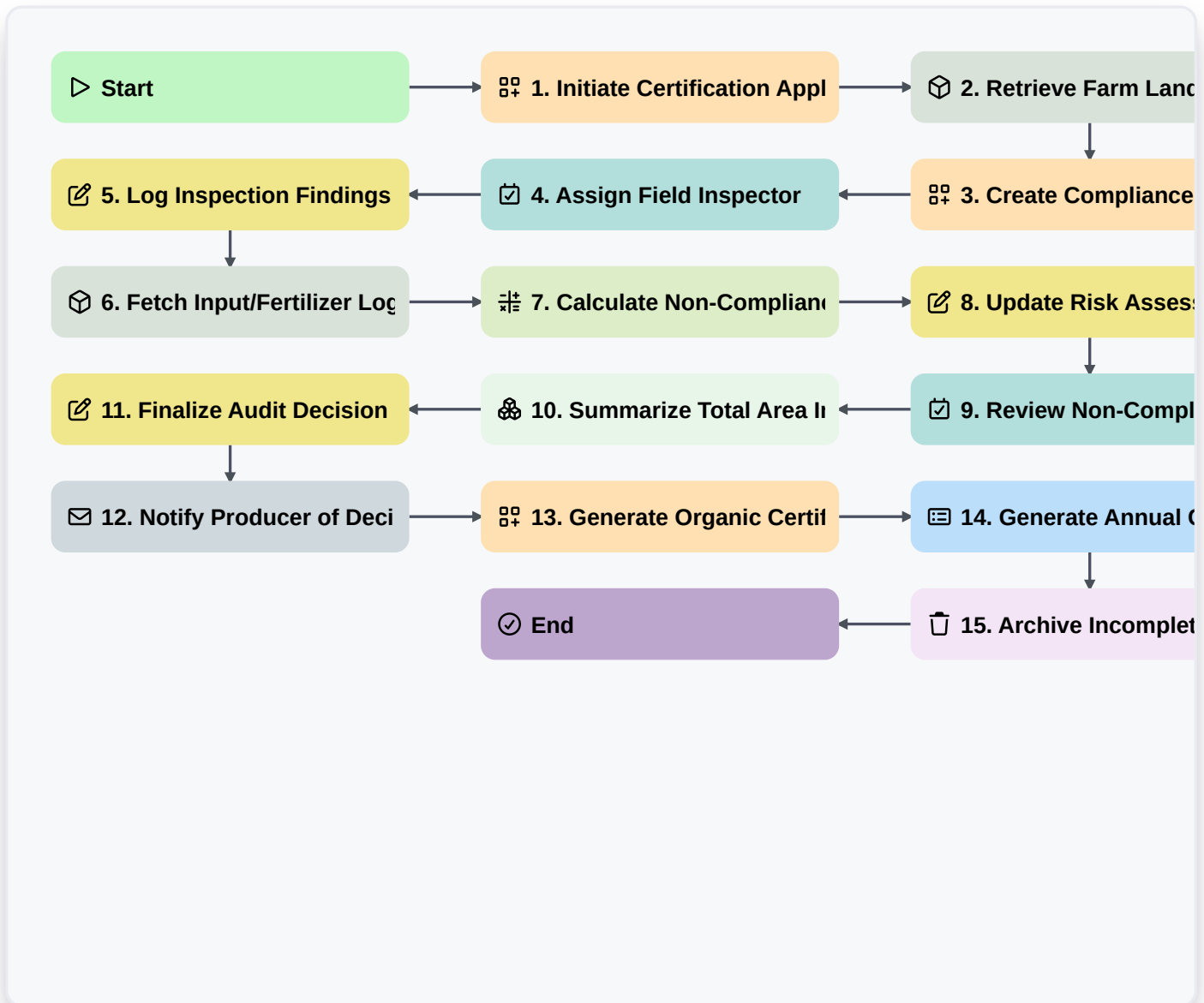


Organic Certification Compliance Workflow



Start

Start of the Workflow/Process.

1. Initiate Certification Application

Create a new entry in the 'Compliance Application' data model with farmer/producer details.

2. Retrieve Farm Land Records

Fetch existing land usage and soil history entries from the 'Farm Land' data model.

3. Create Compliance Checklist

Generate a standardized checklist entry linked to the application for organic standards verification.

4. Assign Field Inspector

Create a task for the 'Audit Team' to perform an on-site physical inspection of the farm.

5. Log Inspection Findings

Update the Compliance Application entry with results, photos, and notes from the field inspector.

6. Fetch Input/Fertilizer Logs

Retrieve all entries from the 'Input Logs' data model to verify no prohibited substances were used.



7. Calculate Non-Compliance Score

Execute a formula based on the number of failed checklist items and severity of findings.

8. Update Risk Assessment

Update the application entry with the calculated risk score (High/Medium/Low).

9. Review Non-Compliance Issues

Create a task for the 'Compliance Officer' to review and decide on corrective actions.

10. Summarize Total Area Inspected

Aggregate the 'Hectares' property from all linked Land entries to verify total organic scope.

11. Finalize Audit Decision

Update the application status to 'Approved', 'Pending Correction', or 'Rejected'.

12. Notify Producer of Decision

Send an email to the farmer/producer contact address with the audit results.

13. Generate Organic Certificate

Create a new entry in the 'Certificates' data model containing the valid period and scope.

14. Generate Annual Compliance Report

Create a summary report for regulatory bodies based on the processed application data.

15. Archive Incomplete Applications

Delete or move entries from the 'Active Applications' model that have been rejected and finalized.

End

End of the Workflow/Process.