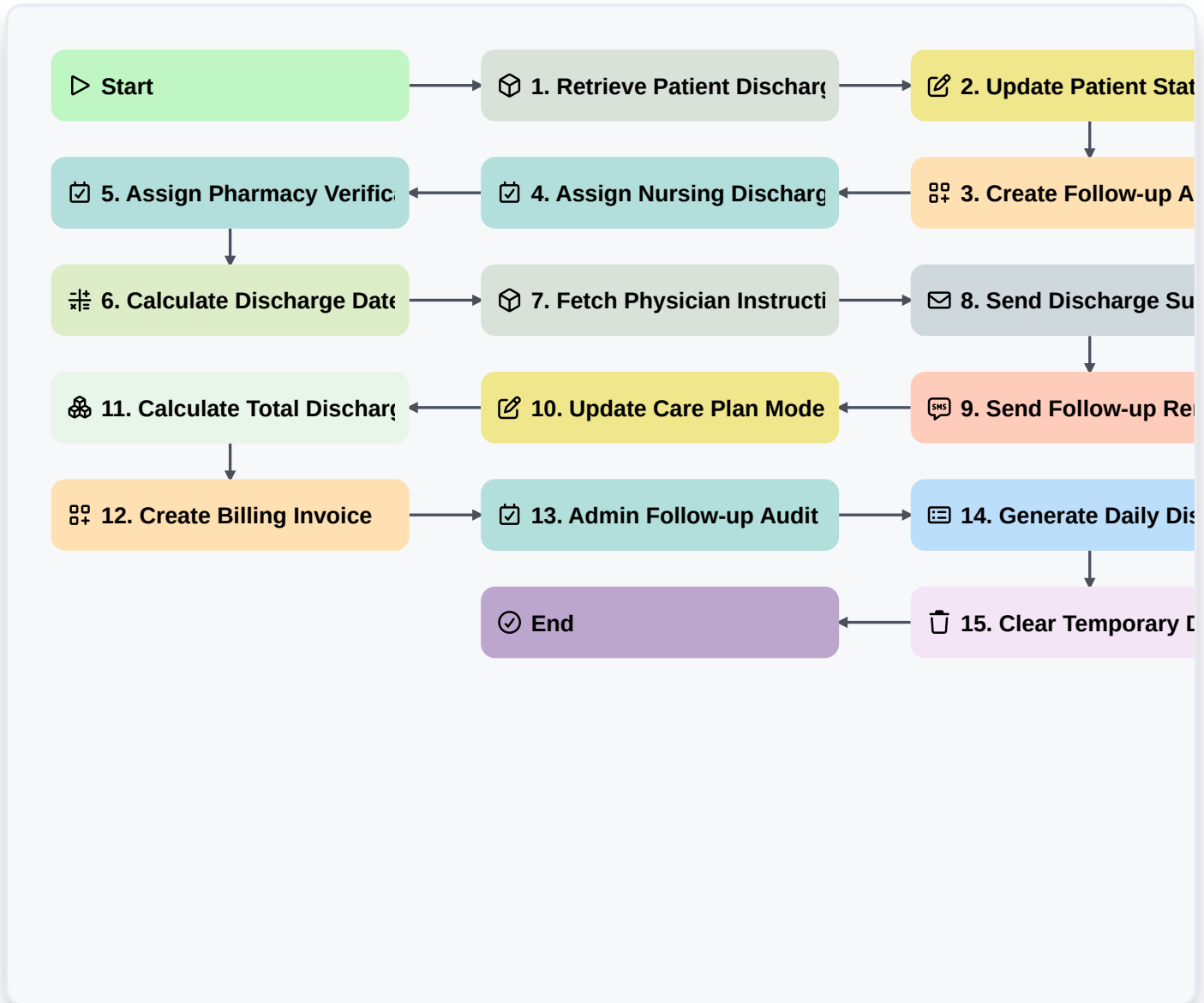


Patient Discharge And Follow-Up Process



▷ Start

Start of the Workflow/Process.

📦 1. Retrieve Patient Discharge Record

Fetch the specific patient record and discharge summary from the Patient Data Model.

✍️ 2. Update Patient Status to 'Discharged'

Update the patient's status in the Patient Data Model to reflect they have left the facility.

📅 3. Create Follow-up Appointment

Create a new entry in the Appointments Data Model for the scheduled post-discharge check-up.

📋 4. Assign Nursing Discharge Checklist

Create a task for the attending nurse to complete the clinical discharge checklist (medication, wound care, etc.).

📋 5. Assign Pharmacy Verification Task

Create a task for the pharmacy department to verify all discharge prescriptions are ready for pickup.

🕒 6. Calculate Discharge Date/Time

Calculate the timestamp for the discharge completion based on current system time.



7. Fetch Physician Instructions

Retrieve the specific post-care instructions recorded by the doctor in the Clinical Notes model.

8. Send Discharge Summary to Patient

Send an email to the patient's registered email address containing their discharge instructions and follow-up details.

9. Send Follow-up Reminder SMS

Send an SMS to the patient's mobile number reminding them of their upcoming follow-up appointment.

10. Update Care Plan Model

Update the Post-Discharge Care Plan entry with the new instructions and medication schedule.

11. Calculate Total Discharge Cost

Aggregate all billing line items associated with this discharge event to calculate the final invoice total.

12. Create Billing Invoice

Create a new entry in the Billing Data Model for the final settlement of the patient's stay.

13. Admin Follow-up Audit Task

Create a task for the medical administrator to audit the completed discharge paperwork for compliance.

14. Generate Daily Discharge Report

Generate a summary report of all patients discharged in the last 24 hours for the facility management.

15. Clear Temporary Discharge Session

Delete the temporary/draft discharge workflow entry once the process is successfully finalized.

End

End of the Workflow/Process.