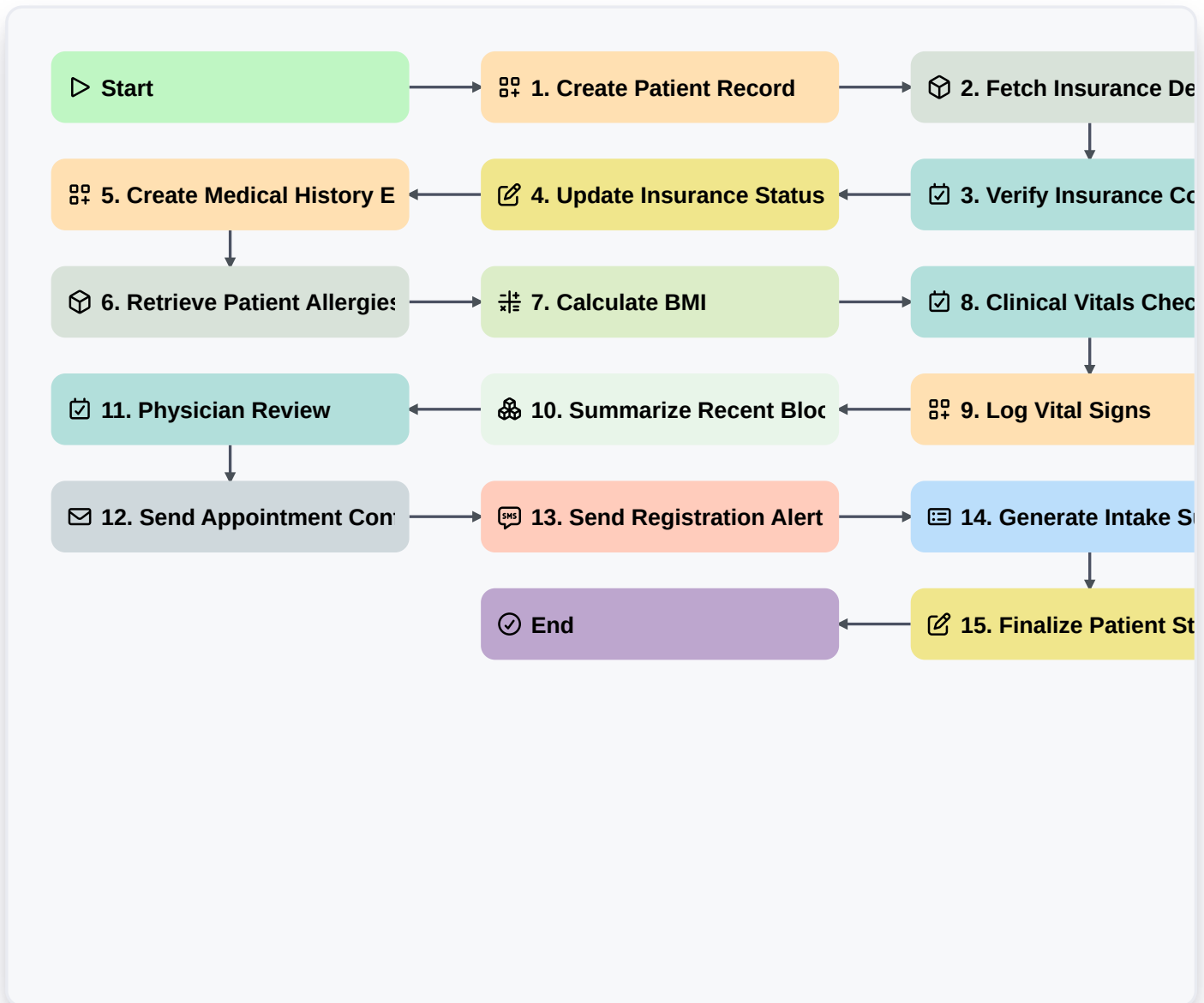


Patient Intake And Registration Workflow



Start

Start of the Workflow/Process.

1. Create Patient Record

Create a new entry in the Patient Data Model with initial demographic information.

2. Fetch Insurance Details

Retrieve existing insurance coverage data from the Insurance Data Model using the patient's ID.

3. Verify Insurance Coverage

Assign a task to the Billing Clerk to validate the retrieved insurance details.

4. Update Insurance Status

Update the 'Verification Status' field in the Patient Data Model once confirmed.

5. Create Medical History Entry

Create a new entry in the Medical History Data Model linked to the patient.

6. Retrieve Patient Allergies

Get all allergy entries associated with the patient to populate the clinical summary.



7. Calculate BMI

Execute formula using Height and Weight entries to calculate Body Mass Index.

8. Clinical Vitals Check

Create a task for the Nurse to record blood pressure, temperature, and heart rate.

9. Log Vital Signs

Create an entry in the Vitals Data Model containing the recorded measurements.

10. Summarize Recent Blood Pressure

Aggregate the last 3 blood pressure entries to calculate the average Systolic/Diastolic pressure.

11. Physician Review

Assign a task to the Physician to review the completed intake form and medical history.

12. Send Appointment Confirmation

Send an automated email to the patient with the confirmed appointment date and instructions.

13. Send Registration Alert

Send an SMS to the patient's mobile number notifying them that their registration is complete.

14. Generate Intake Summary Report

Create a clinical report containing all aggregated data and vital signs for the doctor's session.

15. Finalize Patient Status

Update the Patient Data Model status to 'Registered/Ready for Consultation'.

End

End of the Workflow/Process.