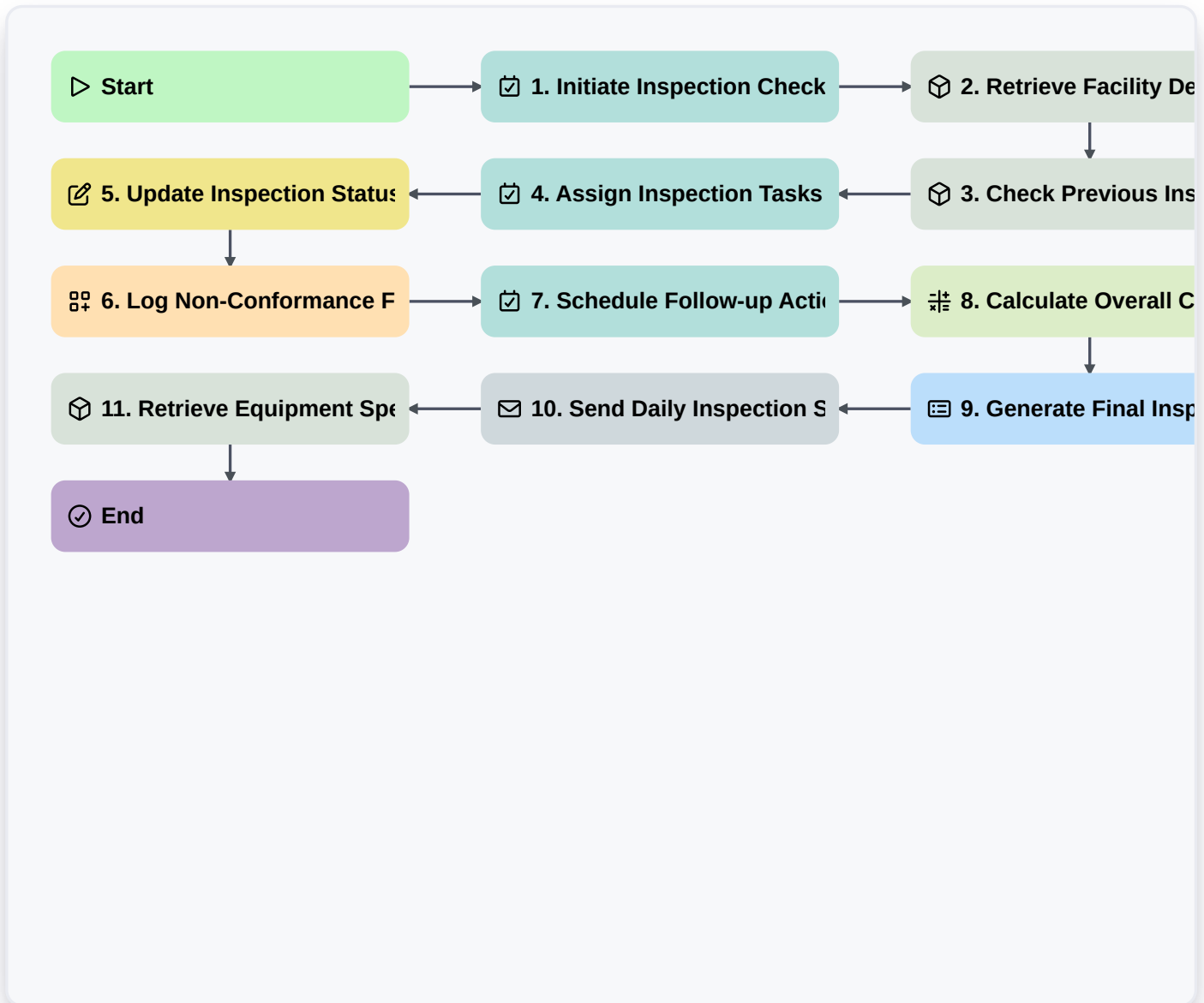


# Pharmaceutical Facility Inspection Workflow: FDA Compliance & Quality Assurance Management



**Start**

Start of the Workflow/Process.

**1. Initiate Inspection Checklist**

Creates a new inspection record for a specific system or area.

**2. Retrieve Facility Details**

Fetch necessary facility and equipment details from the master data model.

**3. Check Previous Inspection Results**

Pull historical data to identify areas requiring heightened scrutiny.

**4. Assign Inspection Tasks to Team Members**

Automatically assign specific inspection checklists to relevant personnel.

### **5. Update Inspection Status**

Mark the current inspection step as complete, recording findings.

### **6. Log Non-Conformance Findings**

Create a new entry detailing any deviations found during the inspection.

### **7. Schedule Follow-up Actions**

Generate and assign remediation tasks for identified non-conformances.

### **8. Calculate Overall Compliance Score**

Automatically score the inspection based on passing/failing criteria.

### **9. Generate Final Inspection Report**

Compiles all data, findings, and corrective actions into a comprehensive report.

### **10. Send Daily Inspection Summary**

Distributes daily summary reports to Quality Assurance and Management.

### **11. Retrieve Equipment Specifications**

Get mandatory operational parameters for the inspected equipment.

### **End**

Start of the Workflow/Process.