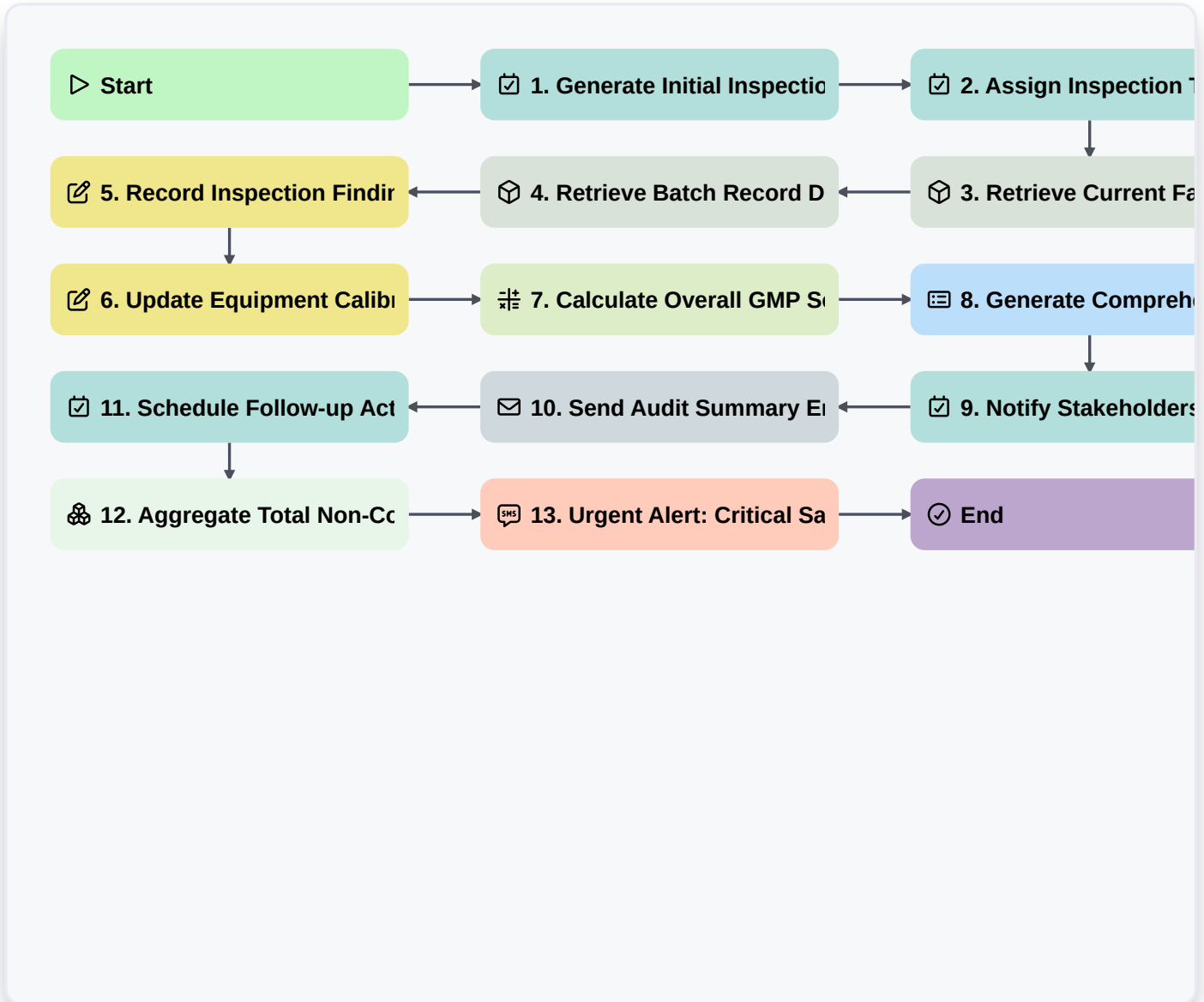


Pharmaceutical Inspection Workflow: GMP Compliance & Quality Audit Management



▷ **Start**

Start of the Workflow/Process.

☑ **1. Generate Initial Inspection Checklist**

Creates the necessary task(s) for the specific inspection audit based on facility scope.

☑ **2. Assign Inspection Tasks to QA Team**

Assigns individual inspection steps and checklists to relevant quality assurance personnel.

📦 **3. Retrieve Current Facility Inspection Schedule**

Fetches scheduled inspections, audit dates, and required checklists for the given location.

📦 **4. Retrieve Batch Record Data for Review**

Gathers necessary raw batch production data to cross-reference with GMP guidelines.

📝 **5. Record Inspection Findings/Non-Conformances**

Allows inspectors to document observations, violations, or deviations found during the audit.

6. Update Equipment Calibration Status

Records the pass/fail status and required corrective actions for audited machinery.

7. Calculate Overall GMP Score

Aggregates data from multiple entries (e.g., completed checklists, unresolved issues) to generate a final compliance score.

8. Generate Comprehensive Audit Report

Compiles all task results, findings, and corrective actions into a final, exportable GMP compliance report.

9. Notify Stakeholders of Audit Completion

Automatically notifies required management and department heads that the inspection cycle is finished.

10. Send Audit Summary Email

Distributes the finalized inspection summary and action items report to relevant stakeholders.

11. Schedule Follow-up Actions/Corrective Actions

Creates follow-up tasks to track the closure of identified deviations (CAPA).

12. Aggregate Total Non-Conformance Count

Sums the count of all recorded findings (deficiencies) across the inspection scope.

13. Urgent Alert: Critical Safety Violation Detected

Sends immediate SMS notification for high-priority, immediate-risk findings.

End

Start of the Workflow/Process.