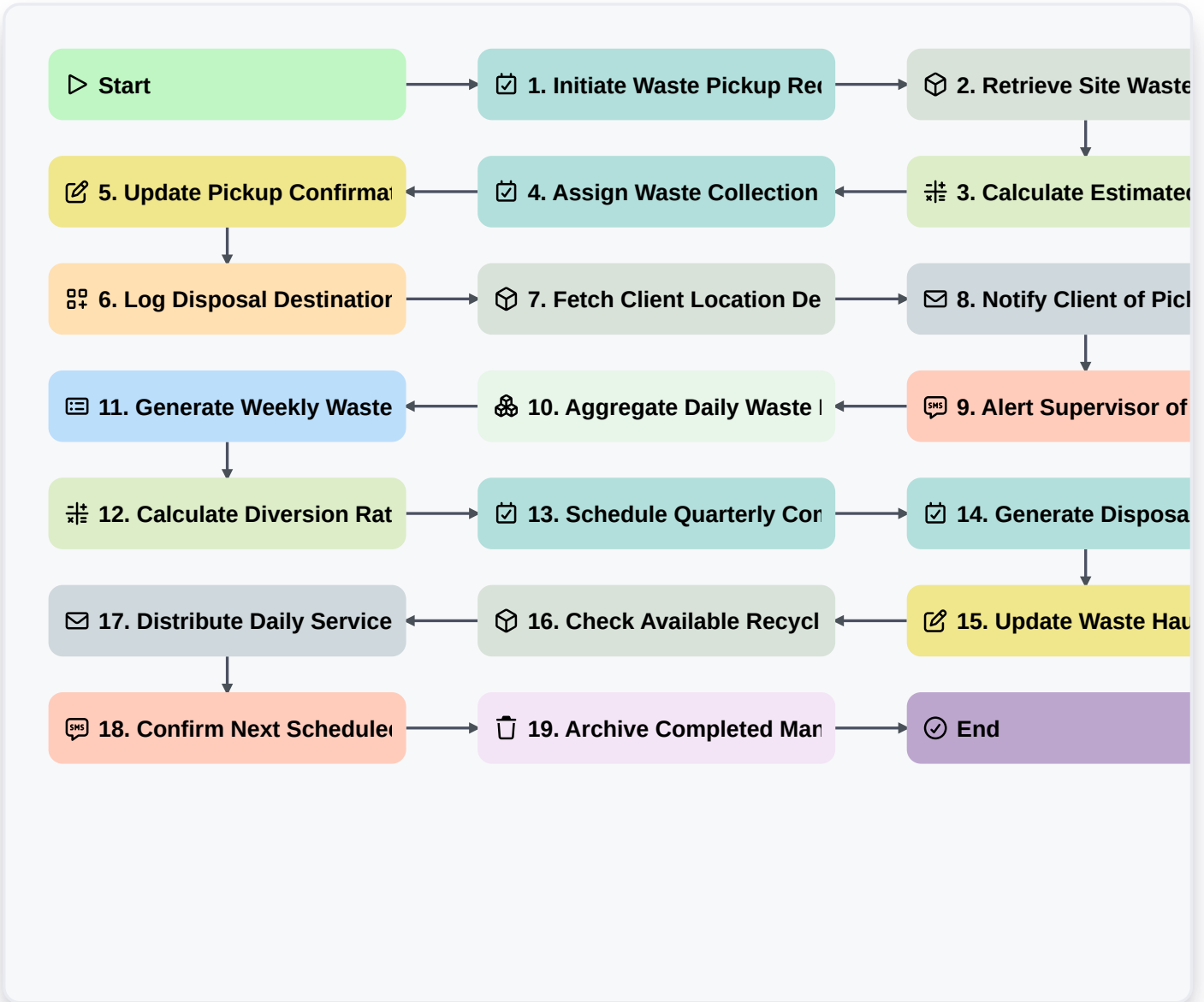


Real-Time Waste Diversion Workflow: Optimized Recycling & Waste Tracking On Work OS



Start

Start of the Workflow/Process.

1. Initiate Waste Pickup Request

Create initial task upon identification of waste requiring removal.

2. Retrieve Site Waste Manifest Data

Fetch current waste type, volume, and location data from the site's inventory model.

3. Calculate Estimated Waste Volume

Calculate projected tonnage or volume based on received material entries (e.g., weight readings).

4. Assign Waste Collection Task

Automatically create a pickup task assigned to the nearest available collection crew.

5. Update Pickup Confirmation Status

Update the waste manifest record once collection is successfully completed by the team.

6. Log Disposal Destination Details

Create a record detailing the final landfill/recycling facility and associated weights.

7. Fetch Client Location Details

Retrieve necessary geographical coordinates and client contact info for service dispatch.

8. Notify Client of Pickup Completion

Send automated confirmation email to the client detailing service completion and weight logged.

9. Alert Supervisor of New High-Priority Waste Alert

Send immediate SMS alert to site supervisor if hazardous waste threshold is exceeded.

10. Aggregate Daily Waste Metrics

Sum up all logged waste weights (recyclable, landfill) for daily reporting.

11. Generate Weekly Waste Diversion Report

Compile a performance report showing total diverted vs. total waste generated.

12. Calculate Diversion Rate Percentage

Calculate $(\text{Recycled Weight} / \text{Total Weight}) * 100$ for reporting.

13. Schedule Quarterly Compliance Audit Task

Automatically set a recurring task for facility compliance checks.

14. Generate Disposal Manifest Task

Create task for documenting final weighbridge tickets and waste streams.

15. Update Waste Haul Truck Readings

Update weight entries with actual data captured from the vehicle scales.

16. Check Available Recycling Capacity

Get real-time capacity data for specific recycling streams (e.g., e-waste).

17. Distribute Daily Service Summary

Email summary of all pickups and weights to the account manager.

18. Confirm Next Scheduled Service Date

Send automated SMS confirmation to the client regarding the next pickup appointment.

19. Archive Completed Manifests

Clean up the system by archiving records after successful report generation.

End

Start of the Workflow/Process.