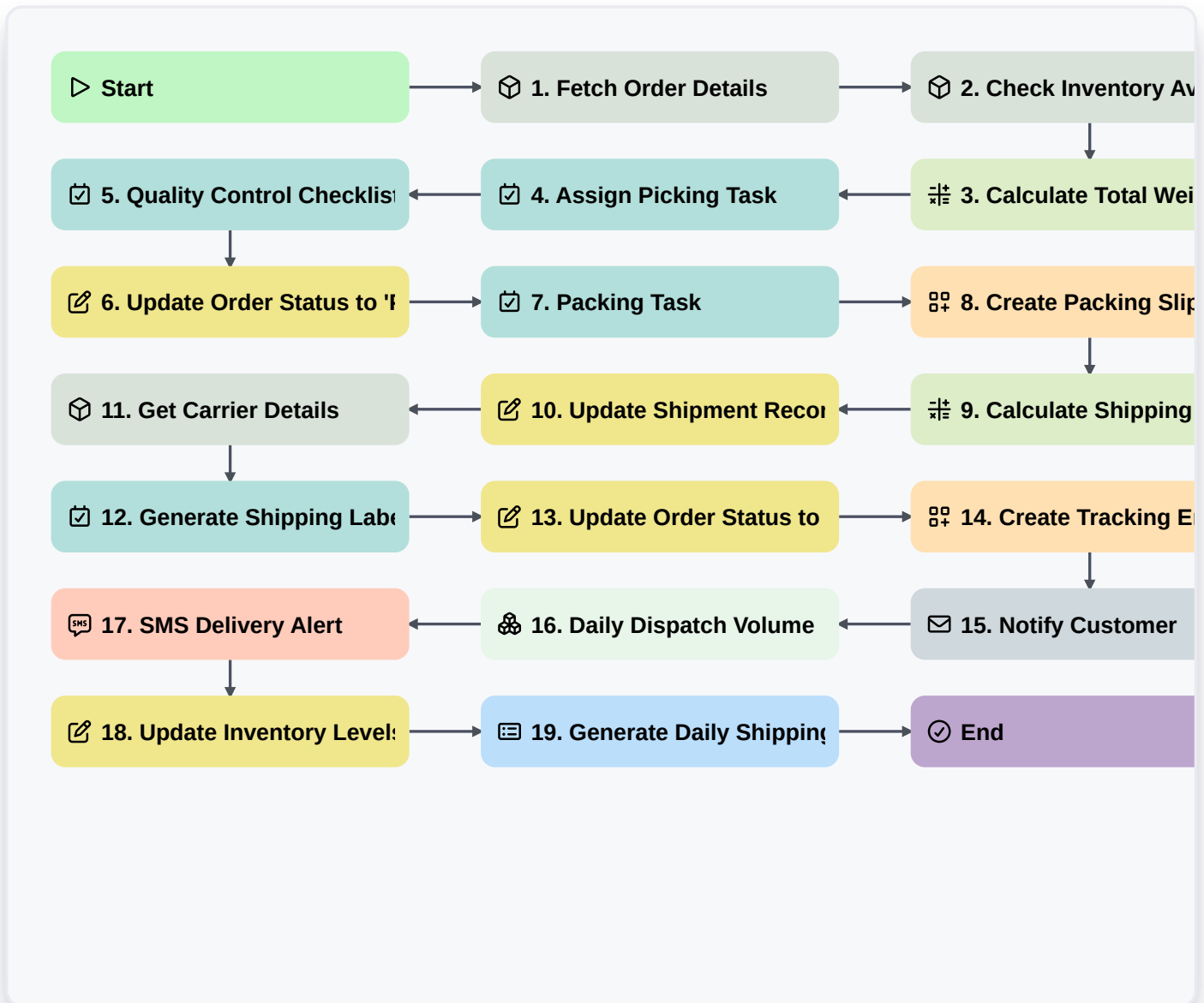


# Shipping And Dispatch Workflow



## Start

Start of the Workflow/Process.

## 1. Fetch Order Details

Retrieve the order information and customer details from the Orders data model.

## 2. Check Inventory Availability

Query the Inventory data model to ensure all items in the order are in stock.

## 3. Calculate Total Weight

Sum the weight of all individual items in the order to determine shipping requirements.

## 4. Assign Picking Task

Create a task for the Warehouse Operator to pick items from the shelves.

## 5. Quality Control Checklist

A predefined list of steps to verify item condition and quantity before packing.

## 6. Update Order Status to 'Picking'

Change the status field in the Order entry to reflect that picking has started.



### **7. Packing Task**

Create a task for the Packing Station staff once picking is complete.

### **8. Create Packing Slip**

Generate a new entry in the Shipping Documents data model containing the packing list.

### **9. Calculate Shipping Cost**

Execute a formula based on weight, dimensions, and destination zone to determine cost.

### **10. Update Shipment Record**

Update the Shipment entry with the final weight and calculated shipping cost.

### **11. Get Carrier Details**

Retrieve API or contact information for the assigned logistics provider.

### **12. Generate Shipping Label**

Create a task to print and attach the carrier-specific shipping label.

### **13. Update Order Status to 'Dispatched'**

Update the Order data model entry to 'Dispatched' state.

### **14. Create Tracking Entry**

Create a new entry in the Tracking Log data model with the tracking number.

### **15. Notify Customer**

Send an automated email to the customer containing their tracking number and order summary.

### **16. Daily Dispatch Volume**

Aggregate the number of completed shipments today to update the Warehouse Dashboard.

### **17. SMS Delivery Alert**

Send an SMS to the customer for high-priority/express shipments.

### **18. Update Inventory Levels**

Decrease the stock count in the Inventory data model based on the dispatched items.

### **19. Generate Daily Shipping Report**

Create a summary report of all completed dispatches for the end-of-day review.

### **End**

End of the Workflow/Process.