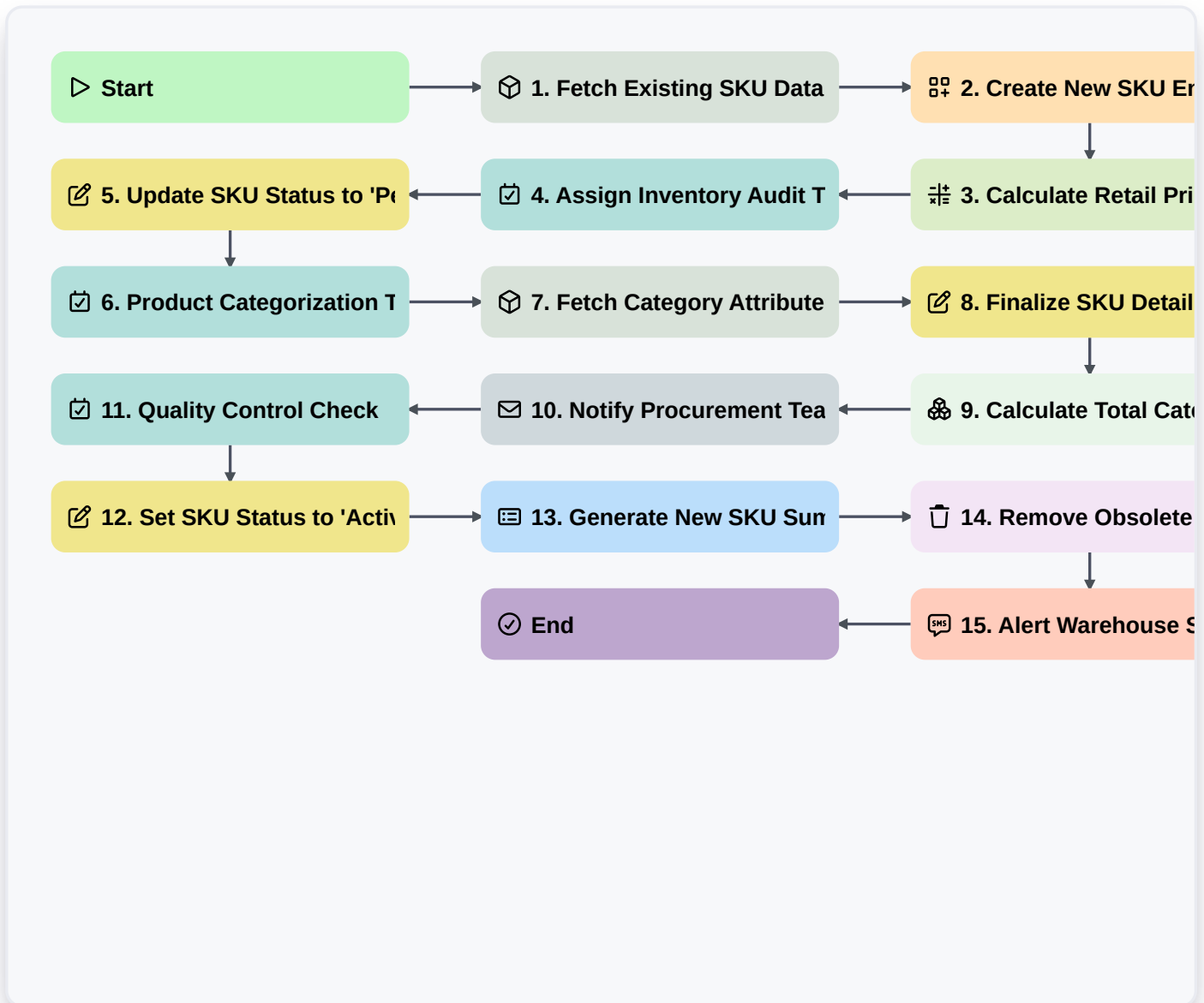


SKU Management And Organization Workflow



Start

Start of the Workflow/Process.

1. Fetch Existing SKU Data

Retrieve existing product entries from the SKU Data Model to check for duplicates or existing attributes.

2. Create New SKU Entry

Generate a new record in the SKU Data Model with initial properties like Name, Category, and Base Cost.

3. Calculate Retail Price

Execute a formula to determine the Selling Price based on Base Cost and a predefined markup percentage.

4. Assign Inventory Audit Task

Create a task for the Warehouse Manager to verify physical stock availability for the new SKU.

5. Update SKU Status to 'Pending Review'

Update the status field of the SKU entry to reflect that it is awaiting categorization approval.

6. Product Categorization Task

Create a task for the Merchandising Team to assign the correct tax codes and department tags.



7. Fetch Category Attributes

Retrieve specific attribute requirements (e.g., size, color, material) based on the selected Category.

8. Finalize SKU Details

Update the SKU entry with the completed attributes and final approved pricing.

9. Calculate Total Category Value

Sum the total inventory value of all SKUs within the same category to assess stock density.

10. Notify Procurement Team

Send an email to the procurement department notifying them that a new SKU is ready for ordering.

11. Quality Control Check

Create a task for the QA specialist to review the product images and documentation uploaded to the entry.

12. Set SKU Status to 'Active'

Update the SKU status to 'Active', making it visible in the storefront/catalog.

13. Generate New SKU Summary Report

Create a report summarizing the new SKU creation activity for the current week.

14. Remove Obsolete SKU Draft

Delete the SKU entry if the creation process was abandoned or the product is discontinued before launch.

15. Alert Warehouse Staff

Send an SMS to the warehouse floor lead regarding the arrival of physical goods for the newly created SKU.

End

End of the Workflow/Process.