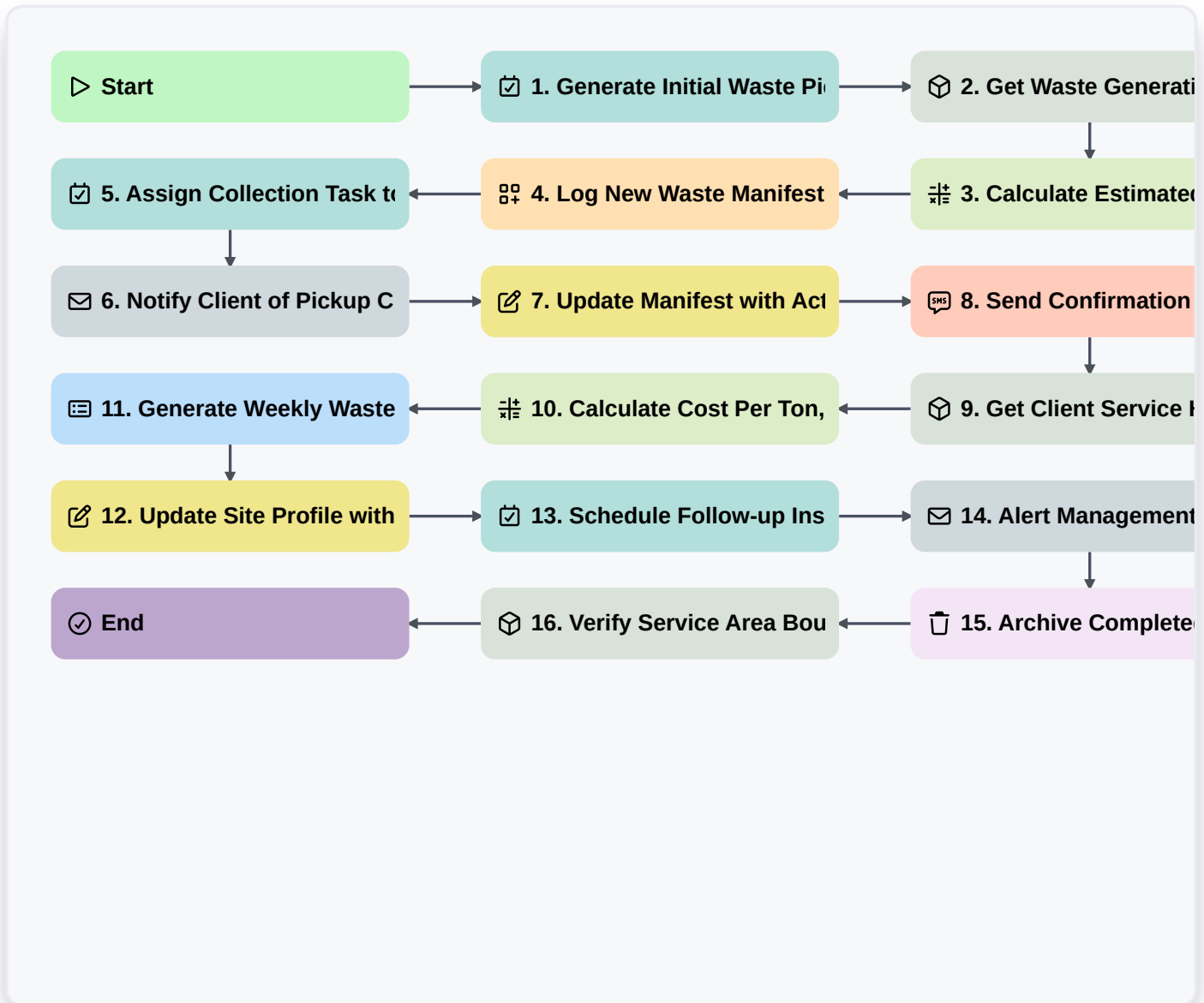


Smart Waste Management Workflow: Digital Process Implementation For Eco-Friendly Solutions



▷ Start

Start of the Workflow/Process.

☑ 1. Generate Initial Waste Pickup Request Task

Create a task for scheduling the initial waste pickup service.

📦 2. Get Waste Generation Data

Retrieve historical and real-time waste volume data from the sensor/source entry.

🧮 3. Calculate Estimated Waste Volume

Execute formula to estimate required capacity based on current data inputs (e.g., $(Weight * VolumeFactor)$).

📄 4. Log New Waste Manifest Record

Create a new record in the Waste Manifest data model for tracking accountability.

✔ **5. Assign Collection Task to Crew**

Automatically assign the necessary pickup task to the relevant collection crew member.

✉ **6. Notify Client of Pickup Confirmation**

Send confirmation email to the client with scheduled collection details.

✎ **7. Update Manifest with Actual Weight**

Update the created manifest entry with the actual weight collected at the site.

📱 **8. Send Confirmation SMS to Client**

Send an SMS update to the client confirming service completion and date.

📦 **9. Get Client Service History**

Retrieve the last 3 months of service records for compliance review.

🔢 **10. Calculate Cost Per Ton, Day**

Calculate the operational cost metric using logged weights and service rate variables.

📄 **11. Generate Weekly Waste Summary Report**

Compile a report summarizing all waste pickup activities for the week.

✎ **12. Update Site Profile with Capacity Used**

Update the client site record with the total volume/weight processed for better future planning.

✔ **13. Schedule Follow-up Inspection Task**

Create a recurring task for follow-up inspection (e.g., 30 days post-service).

✉ **14. Alert Management of Excess Waste**

Send internal alert email if calculated waste volume exceeds predefined thresholds.

🗑️ **15. Archive Completed Manifest Record**

Soft-delete or archive the manifest record once payment is confirmed.

📦 **16. Verify Service Area Boundaries**

Check geospatial data model to confirm the pickup location is within service parameters.

✔ **End**

Start of the Workflow/Process.