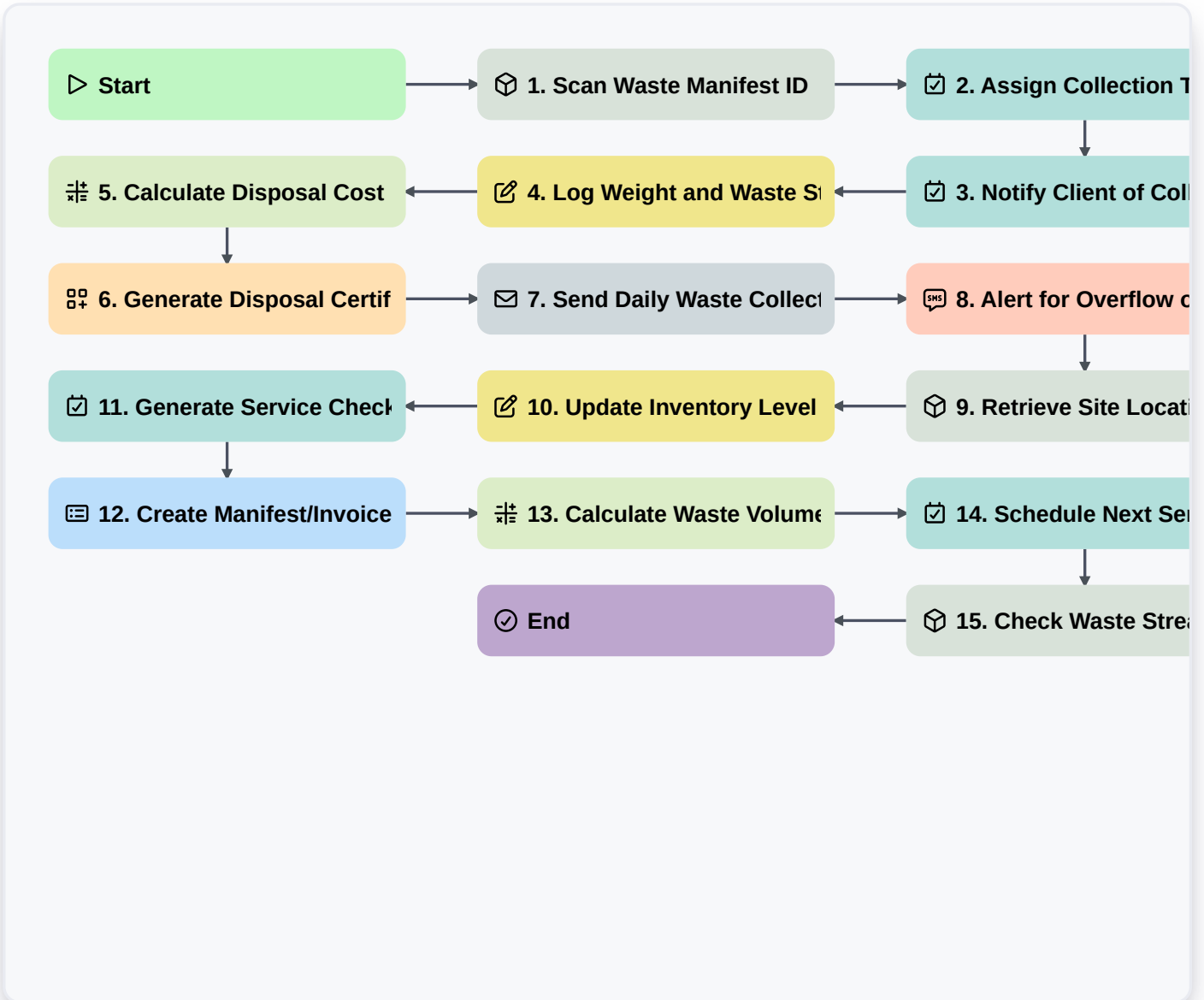


Smart Waste Tracking & Disposal Workflow: On-Site Management For Waste Solutions



▶ Start

Start of the Workflow/Process.

📦 1. Scan Waste Manifest ID

Retrieve initial waste generation data from a source (e.g., physical scan or entry).

✅ 2. Assign Collection Task to Technician

Creates a task for the assigned collection crew member with location and service details.

✅ 3. Notify Client of Collection Appointment

Sends proactive task/alert to the client contact for scheduling confirmation.

📝 4. Log Weight and Waste Stream Data

Updates the primary waste record with actual collected weight and material type.

🔢 5. Calculate Disposal Cost Estimate

Executes formula: $(\text{Total Weight} * \text{Rate Per Ton}) + \text{Service Fee}$ to determine billing estimate.

6. Generate Disposal Certificate Record

Creates the final, auditable record confirming disposal weight and destination.

7. Send Daily Waste Collection Summary Report

Sends an automated email summary to the client/operations manager summarizing the day's pickups.

8. Alert for Overflow or Service Delay

Sends immediate SMS notification if container is over capacity or collection is delayed.

9. Retrieve Site Location Details

Fetches necessary geographic data (lat/long, bin ID) for the service location.

10. Update Inventory Level on Site Bins

Updates the status/fill level of specific waste bins tracked at the location.

11. Generate Service Checklist for Technician

Creates a digital checklist for the crew ensuring all necessary safety and service steps are followed.

12. Create Manifest/Invoice Draft

Generates a preliminary report draft summarizing service provided for billing purposes.

13. Calculate Waste Volume Metrics

Performs mathematical calculations based on collected weights to forecast future waste volume.

14. Schedule Next Service Pickup

Automatically creates a follow-up task for the next scheduled waste collection.

15. Check Waste Stream Compliance Status

Retrieves current regulatory data to validate the proper handling of different waste types.

End

Start of the Workflow/Process.