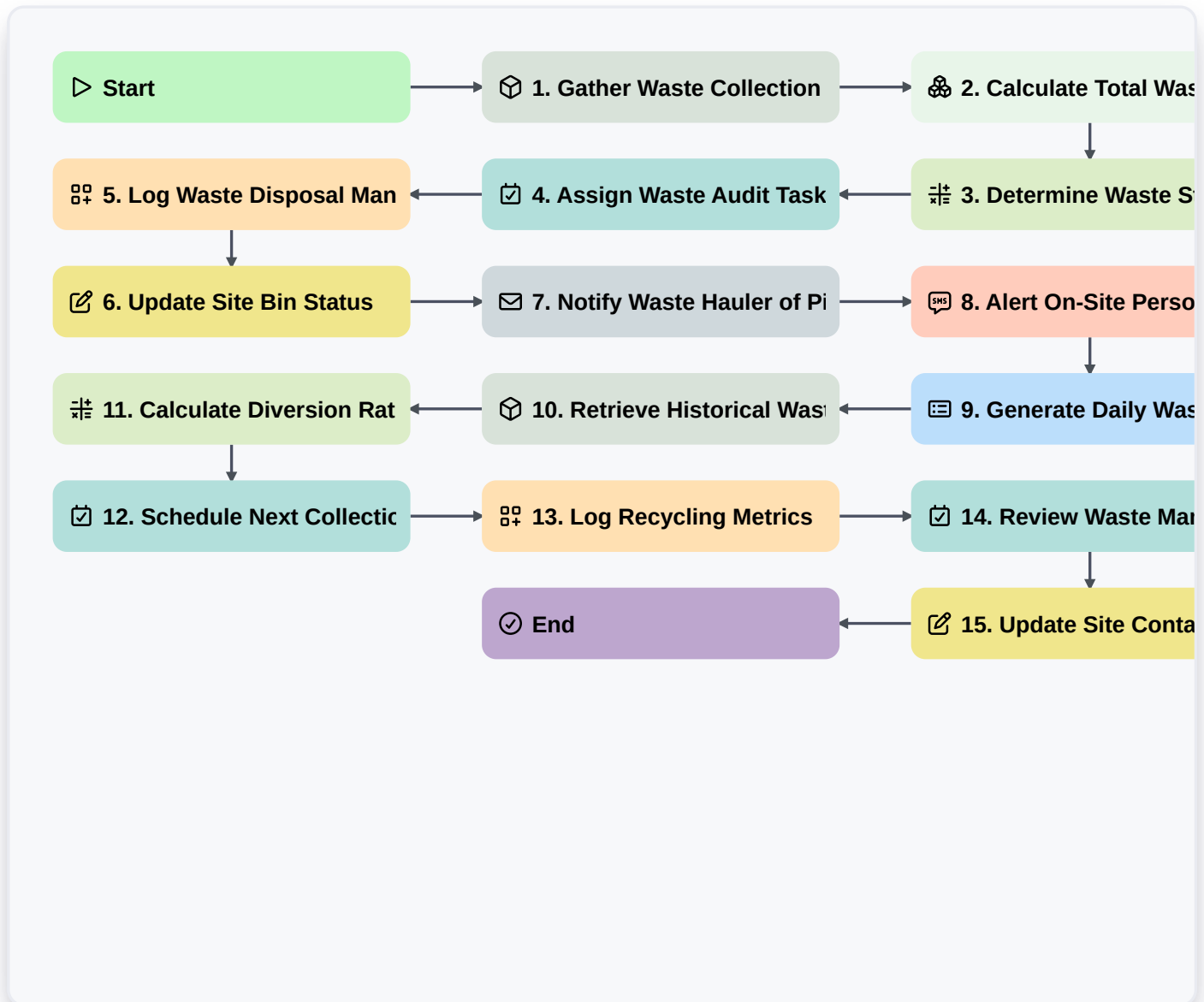


Solid Waste Stream Management Workflow



Start

Start of the Workflow/Process.

1. Gather Waste Collection Data

Retrieve initial data entries for waste generation from site sensors or manual inputs.

2. Calculate Total Waste Volume/Weight

Aggregate retrieved waste volume or weight entries to determine total material collected.

3. Determine Waste Stream Mix Ratio

Calculate the percentage breakdown of different waste streams (e.g., recyclables, organics, landfill) based on weight/volume.

4. Assign Waste Audit Task

Create a task for the site supervisor to conduct a physical waste audit for verification.

5. Log Waste Disposal Manifest

Create a new record logging the destination and weight of disposed waste materials.

6. Update Site Bin Status

Update the current fill level or status of on-site waste bins after collection.

✉ **7. Notify Waste Hauler of Pickup**

Send automated email confirmation and scheduling details to the designated waste hauler.

📱 **8. Alert On-Site Personnel of Deviation**

Send SMS alerts if waste stream contamination or unusual volume spikes are detected.

📄 **9. Generate Daily Waste Collection Report**

Automatically create a comprehensive report summarizing the day's waste generation and diversion rates.

📦 **10. Retrieve Historical Waste Data**

Fetch past performance data for benchmarking against current collection volumes.

📊 **11. Calculate Diversion Rate**

Compute the percentage of waste diverted from landfill ($\text{Recyclables} + \text{Compost} / \text{Total Waste}$).

📅 **12. Schedule Next Collection Pickup**

Automatically create a follow-up task to schedule the next required waste collection cycle.

📝 **13. Log Recycling Metrics**

Record specific details about materials successfully recycled (e.g., tonnage of cardboard).

📋 **14. Review Waste Management Compliance Checklist**

Assign a mandatory review task to ensure adherence to local waste regulations.

✍️ **15. Update Site Contact Info**

Ensure the facility's primary waste contact details are current for the next service visit.

🏁 **End**

Start of the Workflow/Process.