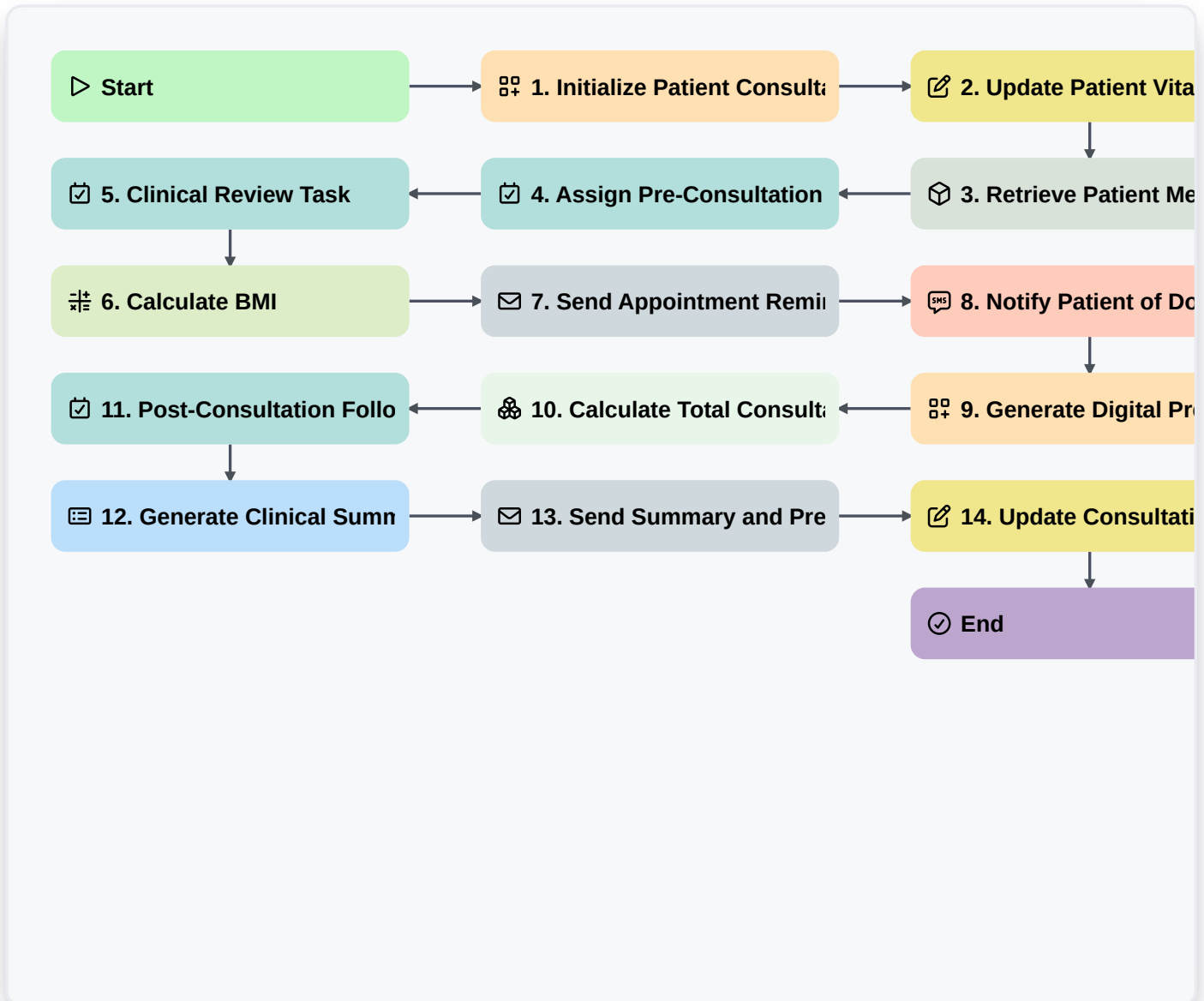


Telehealth Consultation And Virtual Care Process



▷ Start

Start of the Workflow/Process.

🗄️ 1. Initialize Patient Consultation Entry

Create a new data entry in the 'Consultation' data model to initiate the session record.

✍️ 2. Update Patient Vitals

Update the existing consultation entry with newly recorded vitals (heart rate, blood pressure, etc.) provided by the patient.

📦 3. Retrieve Patient Medical History

Fetch existing medical history and allergy data from the 'Patient Profile' data model for the clinician to review.

📝 4. Assign Pre-Consultation Assessment

Create a task for the patient/caregiver to complete a digital health questionnaire before the call begins.

📝 5. Clinical Review Task

Create a task for the Clinician to review the patient's submitted questionnaire and medical history.



6. Calculate BMI

Execute formula (weight / (height * height)) to calculate Body Mass Index from entered vitals.

7. Send Appointment Reminder

Send an automated email to the patient with the video call link and instructions 15 minutes before the scheduled time.

8. Notify Patient of Doctor Arrival

Send an SMS alert to the patient when the clinician has entered the virtual waiting room.

9. Generate Digital Prescription

Create a new entry in the 'Prescriptions' data model linked to the current consultation.

10. Calculate Total Consultation Cost

Aggregate all line items (consultation fee + pharmacy fees + service fees) from the 'Billing' data model to determine total amount due.

11. Post-Consultation Follow-up Task

Create a task for the Nursing Staff to schedule a follow-up check-in call in 7 days.

12. Generate Clinical Summary Report

Create a finalized PDF report summarizing the consultation, findings, and prescribed actions for the patient's records.

13. Send Summary and Prescription to Patient

Send an email containing the consultation summary and digital prescription to the patient's registered email address.

14. Update Consultation Status to 'Completed'

Update the status of the consultation entry to 'Closed' to prevent further edits.

End

End of the Workflow/Process.