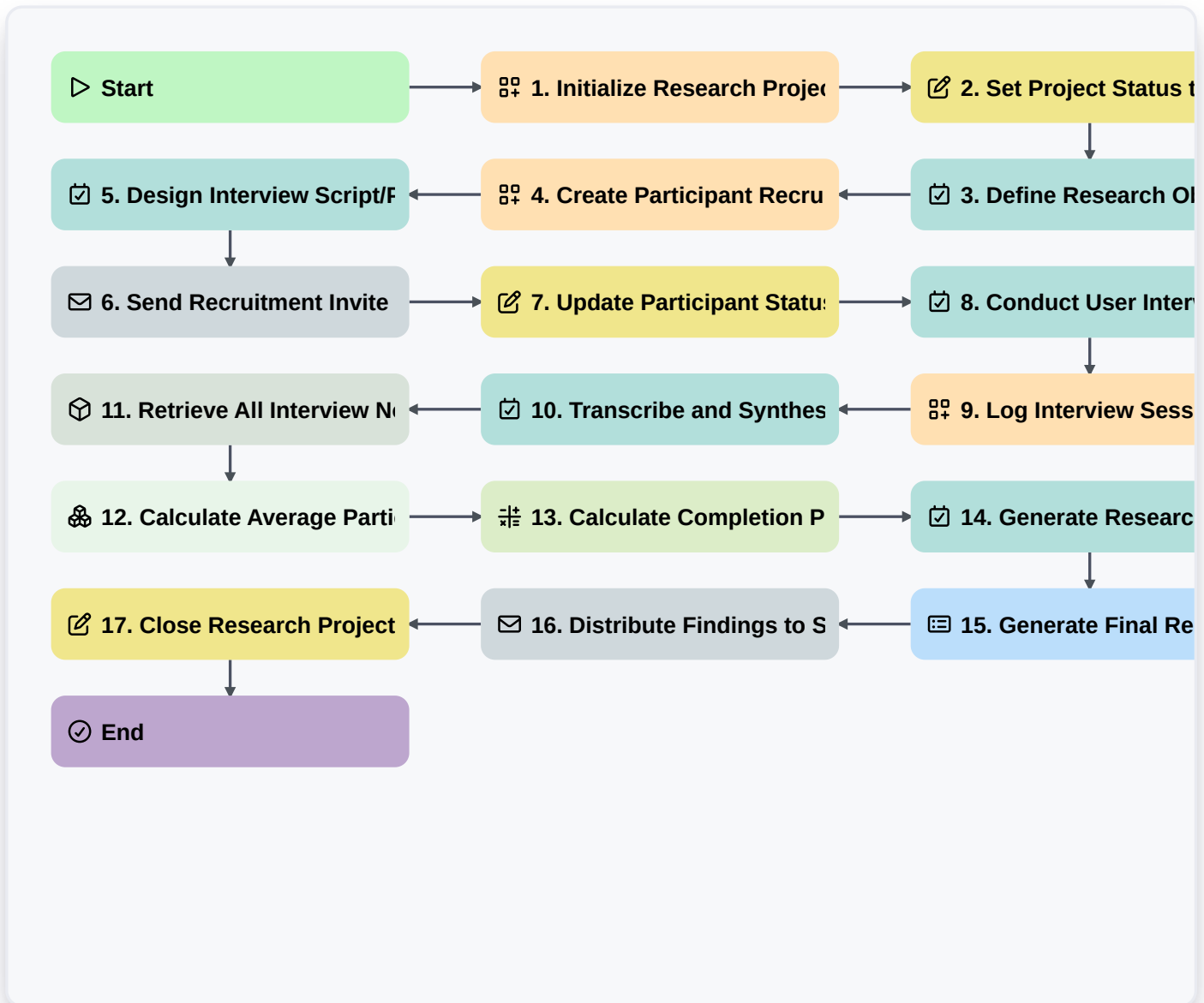


# User Research And Testing Process



## Start

Start of the Workflow/Process.

## 1. Initialize Research Project

Create a new entry in the 'Research Projects' data model to kick off the process.

## 2. Set Project Status to 'Planning'

Update the status of the Research Project entry to indicate the planning phase has started.

## 3. Define Research Objectives

Create a task for the Lead Researcher to define goals, hypotheses, and KPIs.

## 4. Create Participant Recruitment List

Create an entry in the 'Participants' data model to track potential interviewees.

## 5. Design Interview Script/Prototype

Create a task for the UX Designer to prepare the testing materials.

## 6. Send Recruitment Invite

Send an email to the identified participants to invite them to the research session.



### **7. Update Participant Status to 'Confirmed'**

Update the specific participant entry once they accept the invitation.

### **8. Conduct User Interviews**

Create a task to execute the scheduled interview sessions.

### **9. Log Interview Session**

Create a new entry in the 'Research Notes' data model for each completed interview.

### **10. Transcribe and Synthesize Data**

Create a task to review notes and extract key insights.

### **11. Retrieve All Interview Notes**

Fetch all entries from 'Research Notes' associated with the current Research Project.

### **12. Calculate Average Participant Satisfaction**

Aggregate the 'Satisfaction Score' property from all Interview Note entries to find the average.

### **13. Calculate Completion Percentage**

Calculate the ratio of completed interviews vs. total planned interviews.

### **14. Generate Research Findings Report**

Create a task to compile all synthesized data into a final document.

### **15. Generate Final Research Summary**

Create a formal report aggregating all findings, scores, and participant feedback.

### **16. Distribute Findings to Stakeholders**

Send the final research report via email to the Product and Engineering teams.

### **17. Close Research Project**

Update the 'Research Project' entry status to 'Completed'.

### **End**

End of the Workflow/Process.