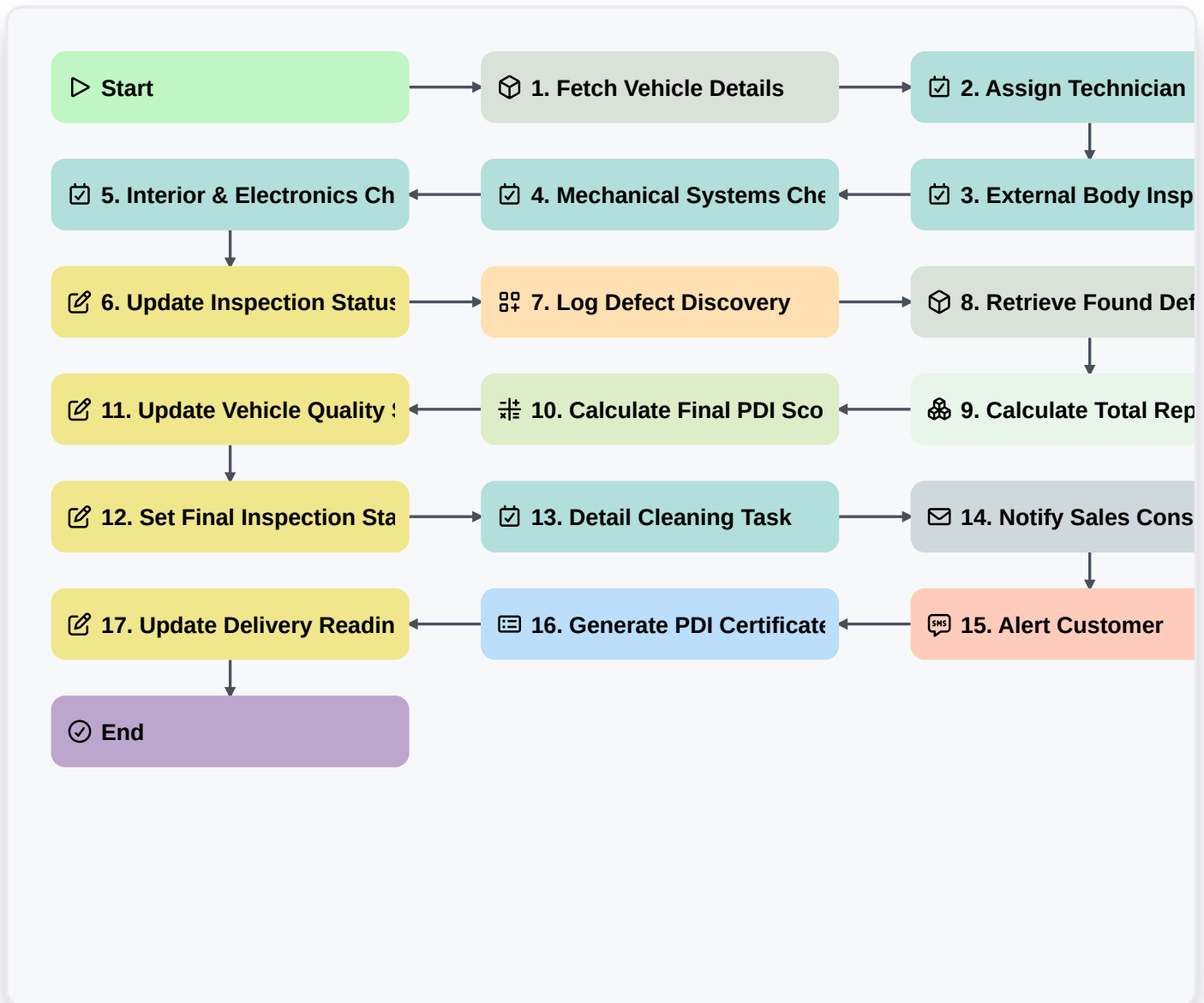


Vehicle Pre-Delivery Inspection (PDI) Process



▷ Start

Start of the Workflow/Process.

📦 1. Fetch Vehicle Details

Retrieve vehicle VIN, model, and customer information from the Vehicle Master Data Model.

✅ 2. Assign Technician

Create a task for the Service Department Lead to assign a technician to the inspection.

✅ 3. External Body Inspection

Create a task for the technician to check for paint defects, dents, or scratches.

✅ 4. Mechanical Systems Check

Create a task to verify engine fluids, battery health, and brake functionality.

✅ 5. Interior & Electronics Check

Create a task to test infotainment, AC, lighting, and seat adjustments.

✍️ 6. Update Inspection Status

Update the vehicle's status in the Vehicle Data Model to 'In Inspection'.



7. Log Defect Discovery

Create a new entry in the 'Defects/Issues' data model if any issues are found during inspection.

8. Retrieve Found Defects

Get all entries from the 'Defects' data model associated with the current VIN.

9. Calculate Total Repair Cost

Aggregate the 'Estimated Cost' property of all retrieved defect entries to get a total repair sum.

10. Calculate Final PDI Score

Calculate a percentage score based on $(\text{Passed_Items} / \text{Total_Items}) * 100$.

11. Update Vehicle Quality Score

Update the calculated PDI score into the Vehicle Data Model.

12. Set Final Inspection Status

Update vehicle status to 'Passed' or 'Failed' based on the presence of critical defects.

13. Detail Cleaning Task

If inspection passed, create a task for the Valet Team to perform a final cleaning.

14. Notify Sales Consultant

Send an email to the assigned Sales Consultant informing them the vehicle is ready for delivery.

15. Alert Customer

Send an SMS to the customer notifying them that their vehicle inspection is complete.

16. Generate PDI Certificate

Create a PDF report summarizing all checked items, defects, and the final score for the customer folder.

17. Update Delivery Readiness

Update the 'Ready for Delivery' checkbox in the Vehicle Data Model to True.

End

End of the Workflow/Process.