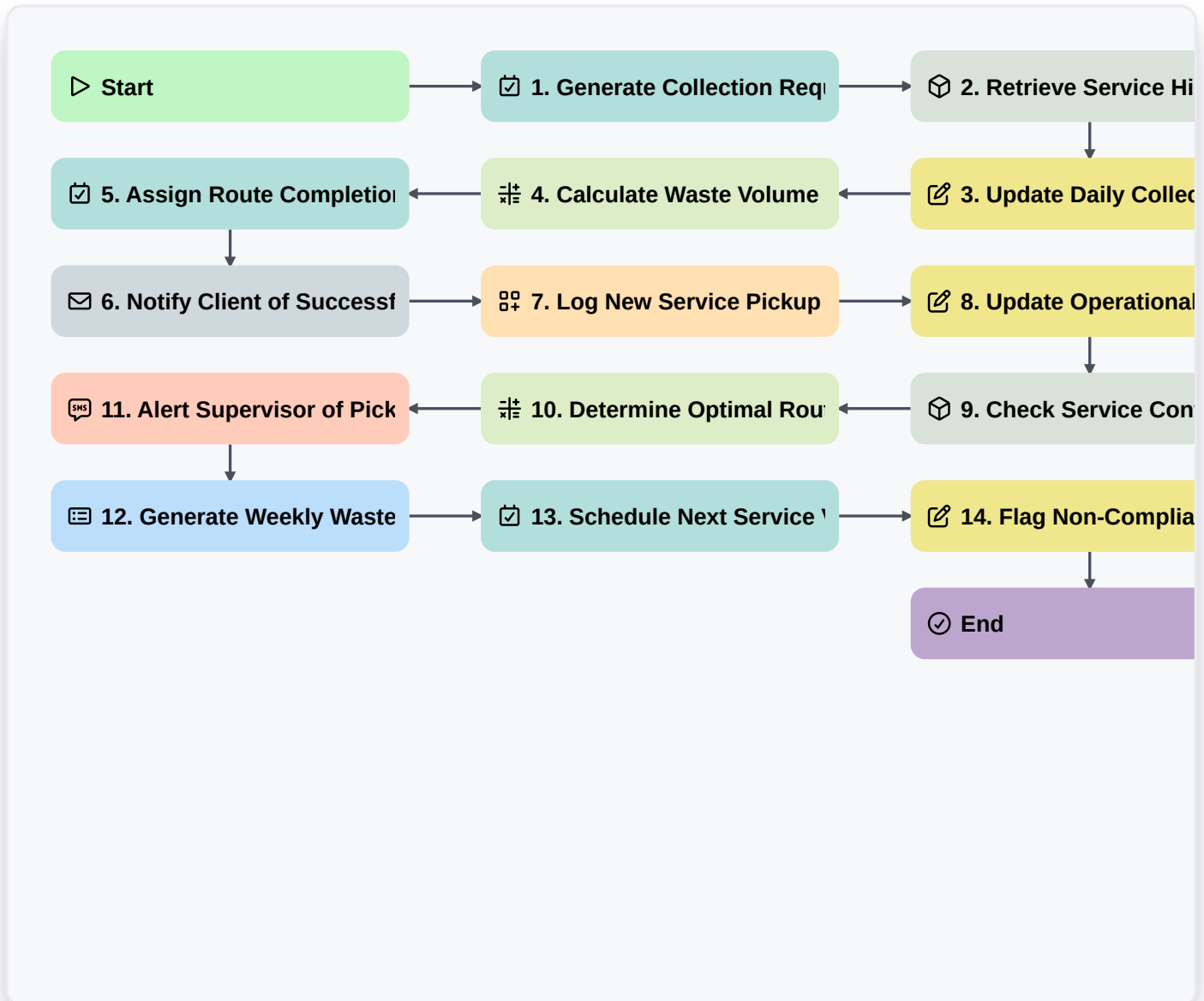


# Waste Collection Scheduling Workflow: Optimize Operations With Work OS Platform



## ▶ Start

Start of the Workflow/Process.

## ☑ 1. Generate Collection Request Task

Creates a task assigned to the field crew upon scheduled waste pickup.

## 📦 2. Retrieve Service History for Location

Fetches past service records and waste type data for the specific pickup address.

## ✍️ 3. Update Daily Collection Manifest

Updates the primary record with actual collected waste metrics, quantities, and timestamps.

## ⚖️ 4. Calculate Waste Volume Variance

Calculates the difference between scheduled and actual measured waste volume (e.g., (Scheduled Weight - Actual Weight)).

## ☑️ 5. Assign Route Completion Check Task

Generates a follow-up task for supervisor sign-off after physical collection.

✉ **6. Notify Client of Successful Collection**

Automatically sends confirmation email to the client detailing the date, services rendered, and any billing information.

📄 **7. Log New Service Pickup Record**

Creates the primary record for the day's service visit, capturing location, date, and initial inspection findings.

✍️ **8. Update Operational Cost Metrics**

Updates internal billing/cost data based on service completion (e.g., fuel usage, labor hours).

📦 **9. Check Service Contract Status**

Verifies the current service agreement terms, frequency, and authorized waste types for the site.

📍 **10. Determine Optimal Route Path**

Uses geolocation data to calculate the most efficient sequence of stops for the collection team.

📱 **11. Alert Supervisor of Pickup Delay**

Sends an immediate SMS alert to the supervisor if the collection vehicle encounters an unforeseen delay or blockage.

📄 **12. Generate Weekly Waste Compliance Report**

Compiles data from all daily entries to create the formal client and regulatory compliance report.

📅 **13. Schedule Next Service Visit**

Proactively creates and assigns the next scheduled maintenance or collection task.

✍️ **14. Flag Non-Compliance/Hazardous Material**

Allows technicians to mark entries requiring special handling or investigation (e.g., unknown materials found).

🏁 **End**

Start of the Workflow/Process.