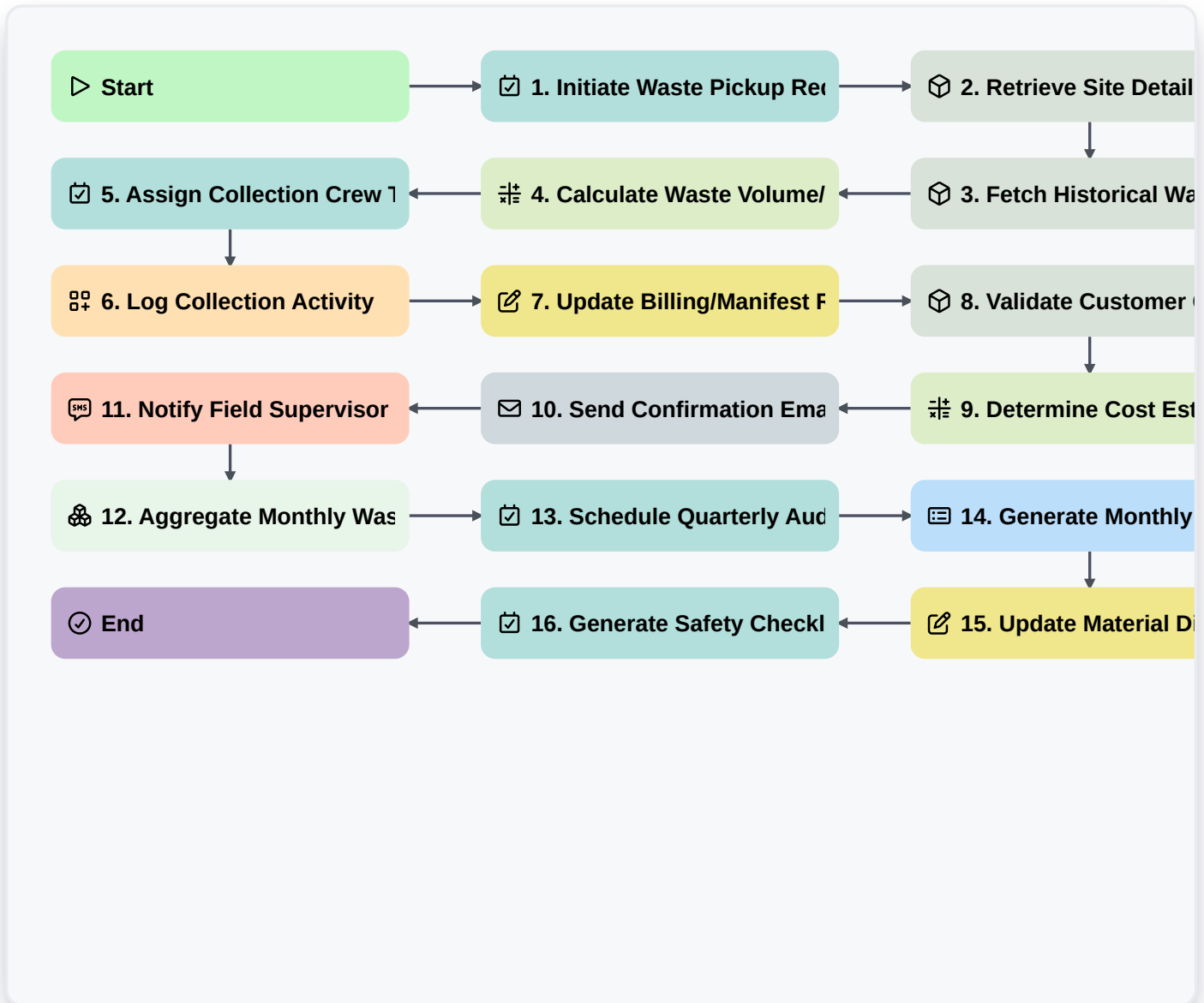


# Waste Management Workflow Automation: Guide For Comprehensive Waste Solutions



## ▶ Start

Start of the Workflow/Process.

## ☑ 1. Initiate Waste Pickup Request

Task creation for scheduling the initial waste collection service.

## 📦 2. Retrieve Site Details

Get necessary site information (location, waste type, contract ID) from the Asset/Location Data Model.

## 📦 3. Fetch Historical Waste Data

Retrieve past waste generation records for comparative analysis.

## 🔢 4. Calculate Waste Volume/Weight Estimate

Execute calculation based on service type and site square footage/historical data.

## ☑ 5. Assign Collection Crew Task

Generate and assign a specific task to the assigned field crew for service execution.

## **6. Log Collection Activity**

Create a new data entry recording the actual date, time, and measured volume/weight of waste collected.

## **7. Update Billing/Manifest Record**

Update the master waste manifest record with confirmed service completion details.

## **8. Validate Customer Credentials**

Check the customer/client data model for valid billing and contact information.

## **9. Determine Cost Estimate**

Calculate projected disposal costs based on aggregated waste metrics and current rates.

## **10. Send Confirmation Email to Client**

Automatically send a service confirmation and preliminary report to the site manager.

## **11. Notify Field Supervisor of Service Change**

Send SMS alert to the supervisor if pickup needs rescheduling or special attention.

## **12. Aggregate Monthly Waste Output**

Sum total waste volume collected across all bins/locations for monthly reporting.

## **13. Schedule Quarterly Audit Task**

Proactively schedule follow-up or preventative maintenance tasks.

## **14. Generate Monthly Compliance Report**

Compile all waste data entries to create the required environmental compliance report.

## **15. Update Material Diversion Rate**

Update the client's overall recycling/diversion metric based on processed data.

## **16. Generate Safety Checklist Task**

Assign mandatory safety checklists to the crew before waste handling commences.

## **End**

Start of the Workflow/Process.