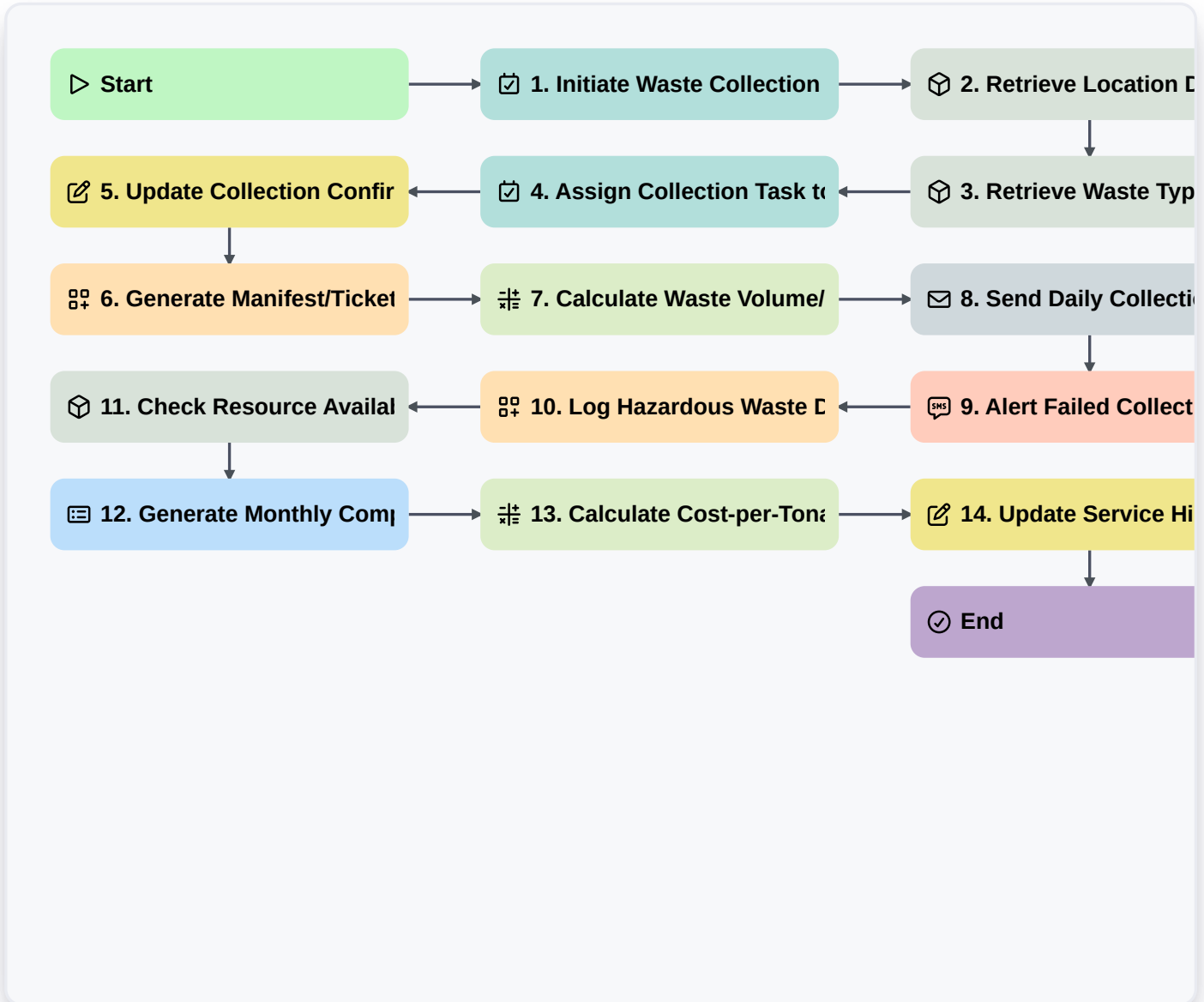


Waste Management Workflow Optimization: Digital Process Guide For Modern Waste Solutions



▷ Start

Start of the Workflow/Process.

☑ 1. Initiate Waste Collection Request

Creates the initial task when waste pickup is scheduled or required.

📦 2. Retrieve Location Details

Fetches necessary site information (GPS, address) from the location data model.

📦 3. Retrieve Waste Type Inventory

Gathers existing waste stream data (e.g., recycling amounts, hazardous materials) from the asset register.

☑ 4. Assign Collection Task to Crew

Automatically assigns the service task to the assigned crew member based on route optimization.

5. Update Collection Confirmation

Records the actual service completion status and date for the waste pickup.

6. Generate Manifest/Ticket

Creates a digital manifest record detailing the collected waste volume and type.

7. Calculate Waste Volume/Weight

Executes formulas to calculate total collected weight or volume from logged entries.

8. Send Daily Collection Summary Report

Automatically emails a summary report of the day's collection activities to the supervisor.

9. Alert Failed Collection

Sends immediate SMS alert to manager if the collection task fails or is delayed.

10. Log Hazardous Waste Disposal Record

Creates a specific record for regulated waste disposal documentation.

11. Check Resource Availability

Checks current fleet capacity or personnel availability before task assignment.

12. Generate Monthly Compliance Report

Compiles all data entries for the period to create necessary regulatory reports.

13. Calculate Cost-per-Tonage

Calculates operational cost efficiency using gathered weight/volume data.

14. Update Service History

Adds the completed service details back to the master client/location record.

End

Start of the Workflow/Process.