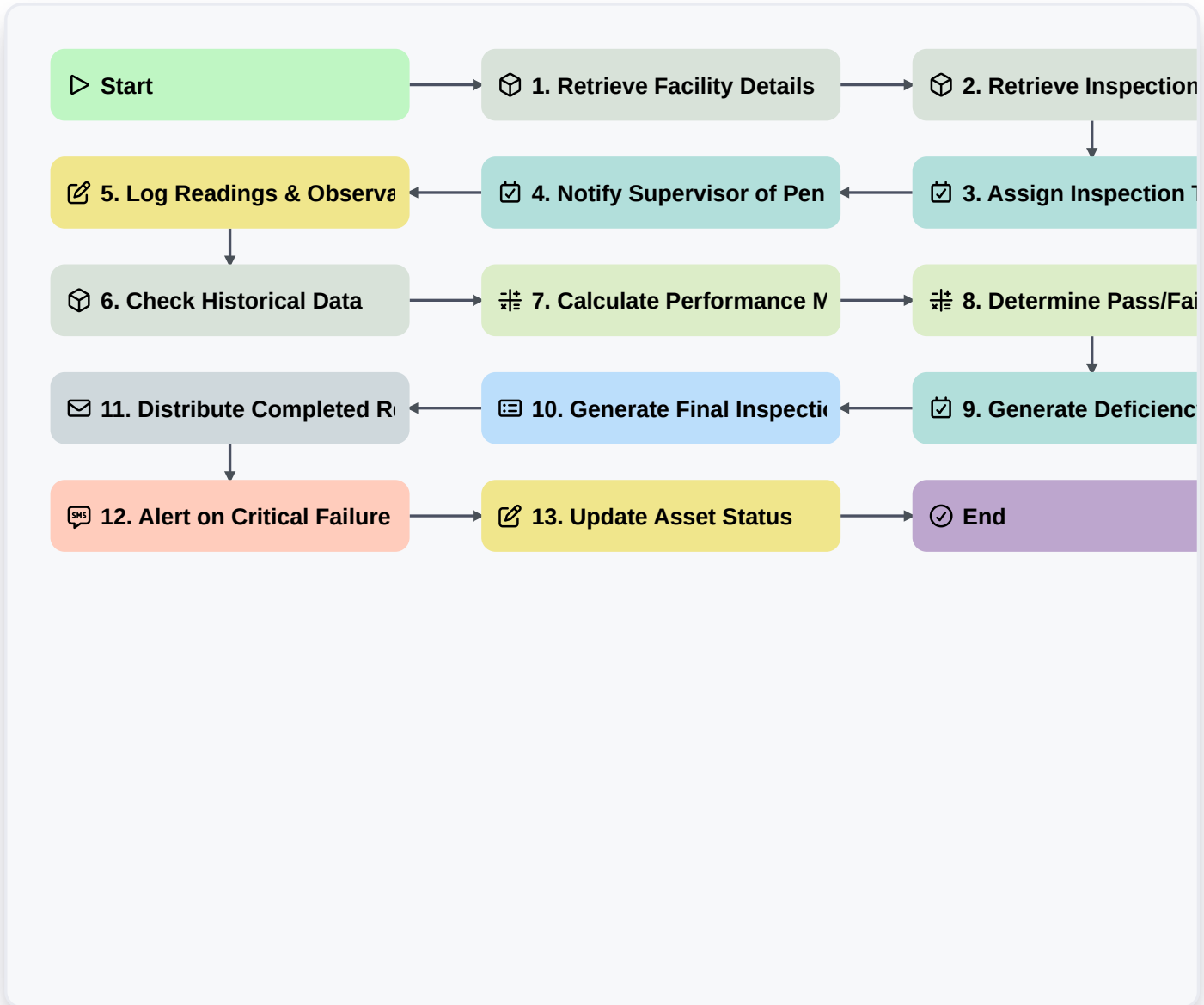


Water Treatment Facility Inspection Workflow: Optimized Process Management



▷ **Start**

Start of the Workflow/Process.

 **1. Retrieve Facility Details**

Get required site and facility information (e.g., plant ID, location) from the facility master data model.

 **2. Retrieve Inspection Checklist Template**

Pull the specific, pre-defined checklist relevant to the inspection type (e.g., Chemical, Mechanical).

 **3. Assign Inspection Tasks to Technicians**

Automatically create inspection tasks and assign them to the appropriate technicians based on facility type and required scope.

 **4. Notify Supervisor of Pending Inspection**

Create a notification task for the supervisor when the initial site assessment tasks are due.

 **5. Log Readings & Observations**

Allow technicians to input real-time data entries for physical parameters (e.g., turbidity levels, gauge readings).

6. Check Historical Data

Retrieve past inspection records and historical performance data for comparison and trending.

7. Calculate Performance Metrics

Execute formulas to calculate KPIs like throughput efficiency, chemical usage deviation, or compliance scoring.

8. Determine Pass/Fail Status

Apply conditional logic based on collected data entries to determine if the inspection segment passed or failed.

9. Generate Deficiency Report Task

Trigger the creation of a follow-up task if any required inspection points fail compliance checks.

10. Generate Final Inspection Report

Compile all collected data, observations, and calculated results into the final, shareable report document.

11. Distribute Completed Report

Automatically email the final inspection report to stakeholders (Client, Engineering, Operations Manager).

12. Alert on Critical Failure

Send immediate SMS alert to on-call maintenance staff if a critical safety or operational failure is recorded.

13. Update Asset Status

Update the master data record to reflect the current operational status (e.g., 'Passed,' 'Needs Minor Repair,' 'Out of Service').

End

Start of the Workflow/Process.